

# Clinical Teacher Certificate

## Student Handbook 2016 - 2017

**TEACHING & LEARNING**  
FACULTY DEVELOPMENT  
MEDICAL EDUCATION



  
Family & Community Medicine  
UNIVERSITY OF TORONTO

This page intentionally left blank.

# Table of Contents

Handbook also available online: [uoft.me/gettingstarted](http://uoft.me/gettingstarted)

## Program Information

Program Description .....	<a href="#">4</a>
Program Requirements .....	<a href="#">4</a>

## Course Information

Course Completion Checklist .....	<a href="#">5</a>
Course Schedule .....	<a href="#">6</a>
Course Descriptions .....	<a href="#">7</a>

## Academic Information

Online at UofT .....	<a href="#">10</a>
Policies and Guidelines .....	<a href="#">10</a>
DFCM Amenities .....	<a href="#">11</a>
AFGS Student Support Fund .....	<a href="#">11</a>

## General Information

Living in Toronto .....	<a href="#">12</a>
Holiday Schedule .....	<a href="#">13</a>
Useful Websites .....	<a href="#">14</a>
Contacts .....	<a href="#">15</a>

# Program Description

This four module program's goal is to provide advanced training in Health Professions Education for interdisciplinary faculty members who want to increase their teaching effectiveness. It is suitable for part time teachers at all career levels: new, mid-career and seasoned.

The University of Toronto requires dedicated teachers to uphold its reputation and recognizes Excellence in Teaching and Education as one of the three paths to Academic Promotion. This program will assist the professional development of any faculty member or the future teacher who wishes to build a career portfolio in teaching.

## Objectives

Participants will be able to:

1. Survey teaching and learning theories and issues in health professional training
2. Acquire skills to design and lead educational programs, such as lectures, courses or workshops, appropriate to their own setting
3. Synthesize a personal approach to teaching that is informed by theory and reflection
4. Select and implement comprehensive program evaluation techniques linking to health care professionals' performance and patient outcomes
5. Implement assessment of, and meaningful and continual feedback to, faculty and students
6. Critically analyze important literature in the field of teaching and learning as applied to practicum/field supervision
7. Practice skills in clinical education scholarship

# Program Requirements

The Clinical Teacher Certificate is comprised of three components:

## Two Required Courses

Two required courses that examine the theoretical base and current issues in clinical education and applications to real life teaching. *Also offered in the combined modular "INTAPT" format.*

- FD07 Teaching and Learning by the Health Professions (A): Principles and Theories
  - FD08 Teaching and Learning by the Health Professions (B): Practical Issues and Approaches
- OR**
- INTAPT (FD07 + FD08) Interprofessional Applied Practical Teaching and Learning in the Health Professions

## Practicum (fieldwork)

The practicum (FD90) provides an opportunity for reflective practice of educational knowledge and skills in professional schools and clinical settings.

## One Selective Course

An elective course from a variety of academic content areas can be chosen from the DFCM course menu (subject to availability).

# CTC Course Completion Checklist

Please use this checklist to keep a record of your courses and for discussion with the Program Director during your quarterly meeting (semi-annual for part-time learners).

Name: \_\_\_\_\_ Expected End Date: \_\_\_\_\_

Start Date: \_\_\_\_\_ Actual End Date: \_\_\_\_\_

Requirements	Proposed Start Date	Proposed Completion Date	Actual Completion Date
FD07: Teaching & Learning (A): Principles and Theories			
<b>AND</b>			
FD08: Teaching & Learning (B): Practical Issues and Approaches			
<b>OR</b>			
INTAPT (FD07 + FD08): Interprofessional Applied Practical Teaching and Learning in the Health Professions			
FD90: Medical Education (Teaching) Practicum			
Selective Course:			
<b>Other Courses</b> (Optional) <i>Additional fees may apply</i>			
1.			
2.			

# Course Schedule

Dates are subject to change; please consult our website for the most current information: [uoft.me/courses](http://uoft.me/courses)

Course Title	Instructors	Period	Time	Location
FD01: Appraising and Applying Evidence to Assist Clinical Decision Making	W. Rosser, C. Holmes, MB DeRocher	Sept - Dec, Jan - Apr, May - Aug	Variable	Online
FD02: Working with Families in Family Medicine	Will not be offered in the 2016-2017 Academic Year			
FD03: Social, Political and Scientific Issues in Family Medicine	Curtis Handford	Continuous July – June	Wednesdays 0900h-1200h	Room 303 500 University Avenue
FD04: Human Development Issues in Family Medicine	Will not be offered in the 2016-2017 Academic Year			
FD05: Research Issues in Family Medicine / Primary Care	R. Moineddin, Sheila Dunn	September – December	Weds (x10) 1300h-1700h	Room 303 500 University Avenue
FD07: Teaching & Learning A: Principles & Theories	Helen Batty, Judith Peranson	July — August	Thursdays (x5) 0800h-1700h	Room 303 500 University Avenue
FD08: Teaching & Learning B: Practical Issues & Approaches	Helen Batty, Judith Peranson	Late April — June	Thursdays (x5) 0800h-1700h	Room 303 500 University Avenue
FD07+FD08: INTAPT	Helen Batty, et al.	Fall one week & Winter one week	Monday-Friday 0800h-1700h	Room 303 & 365 500 University Avenue
FD09: Continuing Education in Health Professions	Savithiri Ratnapalan	September – December	Mondays (x5) 0900h-1700h	12th flr conference rm 525 University Avenue,
FD10: Theory and Practice of Behaviour Change	P. Selby, D. Martin	May – June	Fridays (x8)	Room 103 175 College Street
FD11: Continuing Education – Planning, Management and Evaluation	Savithiri Ratnapalan	5 days in May	0900h–1700h	12th flr conference rm 525 University Avenue,
FD12: Advancing the Future of Healthcare through Interprofessional Learning (EHPIC)	Mandy Lowe, et al.	5 days in June	Monday-Friday 0800h-1700h	St. Andrew's Club 150 King Street West
FD13: Leading Improvement in the Quality of Health Care for Community Populations	Philip Ellison	Late April— June	Mon / Fri (x6) 0900h-1630h	Room 303 500 University Avenue
FD14: Curriculum Foundations in Health Practitioner Field-based Education	S. Glover Takahashi, E. Abner	January – April	Mon / Tues (x6) 0900h-1600h	Room 303 / 602 500 University Avenue
FD15: Assessment and Evaluation Issues in Health Practitioner Field-based Education	S. Glover Takahashi, M. Nayer	May – June	Mon / Tues (x6) 0900h-1600h	Room 303 / 602 500 University Avenue
FD18: Family Medicine and Primary Care in the Global Health Context	Katherine Rouleau, Freida Chavez	January—April	Weds (x7) 1300h-1730h	Room 320 263 McCaul Street
FD23: Practical Management Concepts & Cases in Small Health Organizations	TBD	January—April	TBD	Room 303 500 University Avenue
FD1001: Introduction to Qualitative Methods for Health Services & Policy Research	Fiona Webster, Joanna Sale	January—April	Mondays (x14) 1400h-1600h	Room 412 155 College Street
Pilot 1: Faculty Development in the Health Professions 1	Karen Leslie, Jana Lazor	January – April	Fridays (x8) 1200h-1600h	Li Ka Shing Knowledge Institute
Pilot 2: Educational Technology for Health Practitioner Education	Heather MacNeill, Cindy Plunkett	January – April	Tuesdays in-class and online	Room 303 500 University Avenue
Pilot 3: Theory and Practice of Curriculum Design, Mapping and Program Evaluation in HP Education	S. Glover Takahashi, E. Abner	September – December	Mon / Tues (x6) 0900h-1600h	Room 303 / 602 500 University Avenue
Pilot 4: Applied Survey Methods for Health Care Professionals	P. Krueger	April—June	Weds (x9) 1300h-1700h	Room 303 500 University Avenue
Pilot 5: Using data to improve health, practice performance and understand social determinants	Andrew Pinto	July—August	Weds (x6) 1400h-1700h	Room 301 %00 University Avenue

# Course Descriptions

Visit our website for detailed course descriptions: [uoft.me/courses](http://uoft.me/courses)

---

## **FD01: Appraising and Applying Evidence to Assist Clinical Decision-Making (ONLINE COURSE)**

Instructors: Drs. W. Rosser, C. Holmes and MB DeRocher  
Offered 3 times a year: Jan – Apr, May – Aug, Sept – Dec

---

This course provides a theoretical review of methods to critique Family Medicine literature. There is a focus on discussion about methods that may be used to effectively incorporate evidence-based medicine into teaching in clinical settings.

The course is organized into nine modules. Each module includes required reading, supplementary reading and the completion of two literature critiques. Ideally, each student will complete one module per week, with one or two extra weeks during the course.

---

## **FD02: Working with Families in Family Medicine**

Instructors: TBD  
Thursday mornings, January – April, 10 four-hour sessions

---

This course will focus on the biopsychosocial model of health and illness from a Family Medicine perspective. Family systems theory and family assessment models will be used to identify key family medicine therapeutic goals with respect to different clinical situations. The impact of culture and ethnicity on the framing of health and the family will be examined in detail.

---

## **FD03: Social, Political & Scientific Issues in Family Medicine**

Instructor: Dr. Curtis Handford  
Preferred start: July 1st or Sept 1st  
Wednesday mornings, 9 a.m. to 12 noon

---

The seminar series is intended to be a loosely organized forum where the participants can deliberate, discuss and debate a wide variety of social, political and scientific issues that directly or indirectly influence primary health care.

Examples of "social" factors: socioeconomic disparity in Ontario or globally. Examples of "political" factors: the health care system in Ontario. Examples of "scientific" factors: controversial areas in the medical literature.

---

## **FD04: Human Development Issues in Family Medicine**

Instructor: TBD  
Thursday mornings, Sept – Dec, 10 four-hour sessions

---

This course is designed around the Human Life Cycle with attention to the Erickson Model of development. Other models such as Freud, Piaget and social learning theory will be discussed, evaluated and critically appraised. The importance of developmental psychology, dynamic psychiatry and brain biology as influences are discussed.

---

## **FD05: Research Issues in Family Medicine / Primary Care**

Instructors: Drs. Rahim Moineddin and Sheila Dunn  
Weds afternoons, Sept – Dec, 10 four-hour sessions

---

This course provides an introduction to research methods in family medicine and primary care. By itself, it is not intended to provide the training necessary to do research. However, it is an excellent first step for those wanting to pursue advanced training in primary care research. The course will familiarize the student with the principles of research methods, research design, and clinical measurement and will reinforce critical appraisal skills.

---

## **FD07: Teaching and Learning by the Health Professions A: Principles and Theories**

Instructor: Drs. Helen Batty and Judith Peranson  
Thursdays, July – August, 5 full day sessions  
Modular format: INTAPT (Fall 1 week and Winter 1 week)

---

This course is designed to provide participants with a broad introductory overview of teaching and learning issues in health professional training as a field of scholarly inquiry and research.

*Note: Credit for FD07 and FD08 can also be achieved by completing both weeks of INTAPT.*

---

## **FD08: Teaching and Learning by the Health Professions B: Practical Issues & Approaches**

Instructor: Drs. Helen Batty and Judith Peranson  
Thursdays, April – June, 5 full day sessions  
Modular format: INTAPT (Fall 1 week and Winter 1 week)

---

This course is designed to provide participants with opportunities to develop a scholarly and practical approach to teaching with generous use of case studies and in working in small groups and multidisciplinary teams

*Note: Credit for FD07 and FD08 can also be achieved by completing both weeks of INTAPT.*

---

## **INTAPT: Interprofessional Applied Practical Teaching and Learning In the Health Professions**

Instructor: Dr. Helen Batty, et al.  
One week in fall and one week in winter  
Combined FD07 + FD08

---

This course is designed to provide participants with a broad introductory overview of teaching and learning issues in health professional training as a field of scholarly inquiry and research.

This course will also examine the major topics which are important in developing educational programs for health sciences and will introduce students to some of the important literature in the field of teaching and learning.

# Course Descriptions

Visit our website for detailed course descriptions: [uoft.me/courses](http://uoft.me/courses)

## **FD09: Continuing Education in Health Professions**

Instructor: Dr. Savithiri Ratnapalan  
5 full Mondays in the fall

---

The purpose of this course is to provide learners with a comprehensive and working knowledge of the field of continuing health professional education in the context of knowledge translation (KT). This is an expanding area of higher education and professional practice to which increasing academic attention is directed. In particular, the application of CE and continuing professional development to closing the clinical care gap between what is known and what health professionals actually do, has assumed significance in the Canadian context.

## **FD10: Theory and Practice of Behaviour Change in Primary Care**

Instructors: Drs. Peter Selby and Dawn Martin  
Fridays, May-June

---

The boundaries of providing quality health care are expanding. Clinical professionals are expected to take central roles in promoting healthy behavior and lifestyles. Understanding an individual's values, beliefs and health priorities increases the chance that a behavior change goal will be successful and then maintained. A client-centered approach is critical to enhancing and deepening this understanding.

## **FD11: Continuing Education – Planning, Management and Evaluation**

Instructor: Dr. Savithiri Ratnapalan  
5 days in May  
**Pre-requisite:** FD09

---

Teachers and educators in healthcare function as leaders in education and need the knowledge and skills to plan and manage educational projects and programs. This course is designed to provide a practical approach to educational program planning and implementation.

## **FD12: The Theory and Application of Interprofessional Education**

Instructor: Dr. Susan Wagner  
One week in June

---

This course aims to develop leaders in interprofessional education who have the knowledge, skills and attitudes to teach both learners and fellow colleagues the art and science of working collaboratively for patient-centered care. The course is designed to provide participants with an immersion experience and to allow them to understand constructs related to interprofessional collaboration.

## **FD13: Leading Improvement in the Quality of Health Care for Community Populations**

Instructor: Dr. Philip Ellison  
Mondays and Fridays, 6 sessions in the summer

---

Primary and community health is the foundation of health care in our system. Yet measurements of performance in the Canadian system show that there is room for improvement. Health care providers are primarily motivated in improving care, yet often lack the core skills in quality improvement, nor have been trained in leading or managing the interprofessional teams that are increasingly charged with improving care delivery. This course fills two key niches – developing skills in quality improvement, and the management and leadership of interprofessional teams.

## **FD14: Curriculum Foundations in Health Practitioner Field-based Education**

Instructors: Drs. Susan Glover Takahashi and Erika Abner  
Mondays and Tuesdays, Jan—Apr, 6 full day sessions

---

This course explores the best practices in curriculum foundations in residency and other professional field-based education. Topics will include: curriculum models, understanding learners and teachers' needs, approaches to teaching knowledge, skills and attitudes, learning milieu and introduction to assessment and evaluation issues.

## **FD15: Assessment and Evaluation Issues in Health Practitioner Field-based Education**

Instructors: Drs. Susan Glover Takahashi and Marla Nayer  
Mondays and Tuesdays, May – June, 6 full day sessions  
**Pre-requisite:** FD14

---

This course will explore the theory and practice of three inter-related processes in field-based education: curriculum mapping, assessment of learners and teachers and program evaluation. Students will undertake group projects preparing curriculum maps as well as developing assessment instruments such as examinations, in-training evaluation reports, and simulations. These projects will include class presentations as well as final written reports.

## **FD18: Family Medicine and Primary Care in the Global Health Context**

Instructors: Drs. Katherine Rouleau and Freida Chavez  
Wednesday afternoons, January—April

---

This course is intended to provide an overview of key issues pertinent to the strengthening and delivery of primary care and family medicine around the world while highlighting specifically, based on a review of the evidence, how family medicine can impact global health locally and globally. A key focus of the course will be the history and evolution of primary care, within a broader social policy context as well as a comparative analysis of case studies from around the world.



# Course Descriptions

Visit our website for detailed course descriptions: [uoft.me/courses](http://uoft.me/courses)

## **FD23: Practical Management Concepts & Cases in Leading Small Health Organizations**

Instructors: TBD

January—April, 10 three-hour sessions

---

This is an overview course detailing concepts and issues in leading small health care organizations. Participants will develop an understanding of the leadership and management skills required to be a health care leader.

## **FD1001: Introduction to Qualitative Methods**

Instructors: Drs. Fiona Webster and Joanna Sale

Monday afternoons, January – April

---

This course will provide an introduction to the use of qualitative methods in health services research, clinical research, and policy research. Students will be introduced to philosophical foundations, qualitative approaches and methods, and discover their utility for framing and answering health services research questions.

## **Pilot 1: Faculty Development in the Health Professions Part**

Instructors: Drs. Karen Leslie and Jana Lazor

Fridays, January – April

**Pre-requisite:** FD07 and FD08 preferred

---

This course is an introduction to the field and practice of Faculty Development. There will be four areas of focus 1) background and development, 2) scope and practice, 3) underlying theories and core concepts, and 4) contemporary issues and emerging innovations.

## **Pilot 2: Educational Technology for HP Education**

Instructors: Dr. Heather MacNeill and Cindy Plunkett

Tuesdays in class and online, January – April

---

The course will explore strategies for technology-enhanced teaching and learning in the healthcare professions. Participants will apply principles, methods, and frameworks for utilizing educational technology in educational contexts.

## **Pilot 3: Theory and Practice of Curriculum Design, Mapping and Program Evaluation in Health Practitioner Education**

Instructors: Drs. Susan Glover Takahashi and Erika Abner

Mondays and Tuesdays, Sept – Dec, 6 full day sessions

**Pre-requisite:** FD14 or FD15 preferred

---

This course explores the theory and practice of curriculum mapping and program evaluation, using background literature as well as practical examples drawn from faculty experience. Within curriculum mapping we include conducting needs assessments, and developing cases and spiral curriculum. We will review different approaches to program evaluation as well as a variety of evaluation methods.

## **Pilot 4: Applied Survey Methods for Health Care Professionals**

Instructor: Dr. Paul Krueger

Wednesday afternoons, April—June

---

This tutorial based course focuses on practical issues related to the design, development, conduct, management, and analysis of surveys. Students will apply the knowledge gained in this course to the construction of a survey questionnaire and the preparation of a survey research proposal. The course will cover a variety of survey methods including mailed surveys, web surveys, telephone surveys and mixed mode surveys as well as issues related to questionnaire design, sampling, pilot testing, survey implementation, data collection, data management, data analysis, and ethics.

## **Pilot 5: Using data to improve individual health, practice performance and understand social determinants**

Instructor: Dr. Andrew D. Pinto

Wednesday afternoons, July—August

---

This six-session course is all about applying a population health approach within traditional health service organizations. Students will learn about some of the common sources of data available to characterize the health of individuals, practices and local communities. Students will engage with data to identify “hotspots” and build population profiles, including the distribution of health outcomes and disease in a practice. Students will discuss innovative ways to understand the health care system at a population level through synthesizing clinical data and community data on social determinants.

## **FD90: Medical Education (Teaching) Practicum**

160 hours

---

To provide experience in the role of a medical educator in a variety of settings, e.g., medical education committees, medical teachers meetings, undergraduate small group teaching, seminar presentations, resident one to one clinical training, health promotion and continuing professional education.

Certain teaching activities may require students who do not have CPSO licensure to apply for hospital observer privileges. Students are responsible for finding a hospital “sponsor” and for making all necessary arrangements. Hospital policies with respect to observers must be strictly adhered to at all times. Please see the Program Director for advice.

**Pre-requisite:** One of FD07, FD08 or INTAPT must be taken prior to or concurrently with this practicum.

Please discuss with your Program Director.

# Online at UofT

## **UTORid** ([utorid.utoronto.ca](http://utorid.utoronto.ca))

The UTORid is your username (and password) for a number of different online services offered by the University (e.g., UofT email, Portal, wireless access, etc.). You will receive a "Getting on-line at UofT" letter which contains instructions on how to activate your UTORid at the beginning of your program.

## **UofT Email** ([owa2010.utoronto.ca](http://owa2010.utoronto.ca))

During the UTORid activation process, learners are given the opportunity to set up a University of Toronto email address. We strongly encourage all learners to use this email for communications with the program.

## **UofT Libraries** ([onesearch.library.utoronto.ca](http://onesearch.library.utoronto.ca))

Learners can access the University's collection of articles, e-Journals and databases using their UTORids. To borrow physical materials from the University's vast network of libraries, take your "Getting on-line at UofT" letter and photo identification (e.g., passport) to Robarts Library to obtain a library card.

## **Campus Wireless Network** ([wireless.utoronto.ca](http://wireless.utoronto.ca))

Learners can connect to the University's wireless network for free while on campus. For information on how to configure your device for wireless access, please visit the above website.

## **Learning Portal** ([portal.utoronto.ca](http://portal.utoronto.ca))

The Portal is an online course management system which allows learners to access materials and resources for the courses they are enrolled in. If a course you are enrolled in is not listed on the Portal, please contact us.

## **AFGS Online Community** ([tinyurl.com/afgscommunity](http://tinyurl.com/afgscommunity))

This is our private space on the Learning Portal where all pertinent information — events, deadlines, closures, etc. — will be posted. You can also use this space to discuss issues, throw around ideas and pass on interesting information.

## **DFCM Website** ([dfcm.utoronto.ca](http://dfcm.utoronto.ca))

The program website contains a wealth of information including program details, course schedules and important forms.



# Policies and Guidelines

Please familiarize yourselves with the policies and guidelines below.

- Plagiarism  
[writing.utoronto.ca/advice/using-sources/how-not-to-plagiarize](http://writing.utoronto.ca/advice/using-sources/how-not-to-plagiarize)
- Standards of Professional Practice Behaviour for all Health Professional Students  
[www.governingcouncil.utoronto.ca/Assets/Governing+Council+Digital+Assets/Policies/PDF/ppsep012008i.pdf](http://www.governingcouncil.utoronto.ca/Assets/Governing+Council+Digital+Assets/Policies/PDF/ppsep012008i.pdf)
- Guidelines for Appropriate Use of the Internet, Electronic Networking and Other Media  
[www.pgme.utoronto.ca/sites/default/files/public/Policies\\_Guidelines/Conduct/Guidelines%20for%20the%20appropriate%20use%20of%20the%20internet\\_nh\\_v1\\_06Jan2012.pdf](http://www.pgme.utoronto.ca/sites/default/files/public/Policies_Guidelines/Conduct/Guidelines%20for%20the%20appropriate%20use%20of%20the%20internet_nh_v1_06Jan2012.pdf)
- Academic Competencies for Medical Faculty  
[www.stfm.org/fmhub/fm2007/May/Dona343.pdf](http://www.stfm.org/fmhub/fm2007/May/Dona343.pdf)

# DFCM Amenities

## Hours of Operation

The department is open from 9am-5pm, Monday-Friday. There is normally no access on Saturday or Sunday. The building is accessible between 7:45am and 6:00pm.

## Meeting Rooms

Please be aware that the Department is an open space work environment and we ask that you work quietly in common areas. Meeting rooms can be booked for group meetings, breakout sessions or seminars. Should you need to book a room please contact program staff well in advance.

## Prayer Room

The designated prayer room located on the 1st floor (room 182) is open during building hours and is available to all of our learners.

## “Quiet” Study Space

There is designated study space at the DFCM library for program participants. This space is accessible during our regular operating hours. The University of Toronto also has a wonderful system of libraries with longer operating hours which may be more suitable to your needs. For a list of central libraries and their hours please visit their website: [resource.library.utoronto.ca/hours/](http://resource.library.utoronto.ca/hours/)

## Computer Workstations

Several workstations are available for use in the DFCM library during regular office hours. Please remember that this is quiet space that is shared with others who are also working.

## DFCM Library

The DFCM library collection consists of hard copy and online books, periodicals, Residents' projects and a selection of previous Fellows' papers.

To borrow books or for help with literature searching, contact Robyn Butcher:

Tel: 416-978-5606

Email: [dfcm.librarian@utoronto.ca](mailto:dfcm.librarian@utoronto.ca)

Website: [dfcm.utoronto.ca/library.htm](http://dfcm.utoronto.ca/library.htm)

## Supplies

In general, stationery and office supplies are not provided by the department.

## Photocopying and Printing Services

Learners may use the departmental photocopier and printer without charge for *small* print jobs. The department ID for our learners is 5001. There is no password. The program asks all learners to show restraint in this facility.

## Mailboxes

A mailbox slot is provided for all international learners. A mailbox slot may be available to domestic learners upon request.

## Kitchen Facilities

Learners are welcome to use the kitchen facilities while at the department. Please note that the department provides no cleaning services. Therefore learners are asked to clean up after themselves and ensure that all rooms are left tidy after each session.

# AFGS Student Conference Support Fund

The Department of Family and Community Medicine is committed to fostering and supporting scholarship across all programs in our department. Through the Academic Fellowship and Graduate Studies (AFGS) Student Conference Support Fund, the AFGS Program aims to support current AFGS learners in presenting scholarly work related to their AFGS program at national or international conferences.

# Living in Toronto

## Living Expenses

Applicants from abroad should secure funding well in advance of starting their intended program. In addition to tuition fees, a single adult will likely require a minimum of \$1,500 per month in living expenses plus health insurance costs.

## Housing

Housing costs in Toronto can vary from \$700/month for a furnished room to \$3000/month for a three bedroom home. Most local newspapers and many websites have listings of available rental housing by area.

## Banking

Upon arriving in Toronto, you should open a checking account and obtain a Canadian funds credit card. Many bank alternatives are available in the area:

- BMO Bank of Montreal  
438 University Avenue | [bmo.com](http://bmo.com)
- CIBC  
460 University Avenue | [cibc.com](http://cibc.com)
- RBC Royal Bank of Canada  
443 University Avenue | [rbcroyalbank.com](http://rbcroyalbank.com)
- Scotia Bank  
522 University Avenue | [scotiabank.com](http://scotiabank.com)
- TD Canada Trust  
465 University Avenue | [tdcanadatrust.com](http://tdcanadatrust.com)

## Transportation

### Public Transit

The Toronto Transit Commission ([ttc.ca](http://ttc.ca)) operates buses, streetcars and subways in Toronto.

GO Transit ([gotransit.com](http://gotransit.com)) is the regional public transit service for the Greater Toronto and Hamilton area.

### Driving in Ontario ([www.mto.gov.on.ca](http://www.mto.gov.on.ca))

International learners must obtain an Ontario license in order to drive in the province. You will also need appropriate insurance valid in Ontario. If you have a valid license from another country or an international driver's license, you may use this for up to 60 days.

## Health Care

The University of Toronto participates in a Health Insurance Plan ([uhip.ca](http://uhip.ca)) for international learners and their families. UHIP provides basic coverage for most medically necessary services.

To apply, please contact the program staff. Learners must enroll within one month of their arrival or be subject to a penalty.

To find a doctor for you and your family, you can contact Health Care Connect. Website: [health.gov.on.ca/en/ms/healthcareconnect/public/](http://health.gov.on.ca/en/ms/healthcareconnect/public/)

Each July there are new resident family physician trainees accepting new patients at the DFCM teaching sites. It may be possible for learners and their families to register as regular patients with one of these residents. All residents are supervised by DFCM faculty physicians.

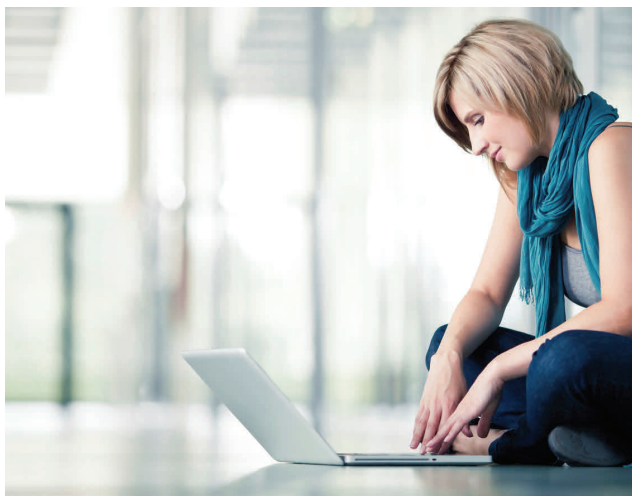
## Child Care

There are over 900 licensed child care centers and over 2000 approved home care providers in Toronto. To find a child care program that suits your needs, please visit the City of Toronto website: [toronto.ca/children/childcare.htm](http://toronto.ca/children/childcare.htm)

## Toronto Public Schools

International learners traveling to Canada with their school aged children can contact the Toronto District School Board ([tdsb.on.ca](http://tdsb.on.ca)) to register them in school during their stay in Canada.

Your home address in Toronto will determine which school your child is eligible to attend. Some schools in the UofT area are Orde Street Public School, Jesse Ketchum Public School and Huron Street Jr. Public School.



# Holiday Schedule

<b>July 1, 2016 to June 30, 2017</b>	
Canada Day	Friday, July 1, 2016
Civic Holiday	Monday, August 1, 2016
Labour Day	Monday, September 5, 2016
Thanksgiving Day	Monday, October 10, 2016
Christmas / New Year	Wednesday, December 21, 2016 to Sunday, January 1, 2017 inclusive
Family Day	Monday, February 20, 2017
Good Friday	Friday, April 14, 2017
Victoria Day	Monday, May 22, 2017
<b>July 1, 2017 to June 30, 2018</b>	
Canada Day	Monday, July 3, 2017
Civic Holiday	Monday, August 7, 2017
Labour Day	Monday, September 4, 2017
Thanksgiving Day	Monday, October 9, 2017
Christmas / New Year	Thursday, December 21, 2017 to Tuesday, January 2, 2018 inclusive
Family Day	Monday, February 19, 2018
Good Friday	Friday, March 30, 2018
Victoria Day	Monday, May 21, 2018

# Useful Websites

## Social and Information Resources

---

Government of Canada  
[canada.ca](http://canada.ca)

Citizenship and Immigration Canada  
[cic.gc.ca](http://cic.gc.ca)

Ontario Travel & Tourism  
[ontariotravel.net](http://ontariotravel.net)

City of Toronto – Official Website  
[toronto.ca/](http://toronto.ca/)

City Directory  
[toronto.ca/city\\_directory](http://toronto.ca/city_directory)

Community, Social, Health and Government Services  
[211toronto.ca](http://211toronto.ca)

Tourism Toronto  
[seetorontonow.com](http://seetorontonow.com)

Shopping and Events in Toronto  
[toronto.com](http://toronto.com)

Toronto Public Libraries (TPL)  
[torontopubliclibrary.ca](http://torontopubliclibrary.ca)

TPL - ESL and Newcomer Programs  
[torontopubliclibrary.ca/programs-and-classes/categories/newcomer-esl-programs.jsp](http://torontopubliclibrary.ca/programs-and-classes/categories/newcomer-esl-programs.jsp)

TPL - Health and Wellness Classes  
[torontopubliclibrary.ca/programs-and-classes/categories/health-wellness.jsp](http://torontopubliclibrary.ca/programs-and-classes/categories/health-wellness.jsp)

TPL Library holdings in languages other than English  
[torontopubliclibrary.ca/books-video-music/your-language/](http://torontopubliclibrary.ca/books-video-music/your-language/)

Writing at the University of Toronto  
[writing.utoronto.ca](http://writing.utoronto.ca)

The Purdue Online Writing Lab (OWL)  
[owl.english.purdue.edu](http://owl.english.purdue.edu)

## Transit

---

Bike Share Toronto  
[bikesharetoronto.com](http://bikesharetoronto.com)

GO Transit (regional trains and buses)  
[gotransit.com](http://gotransit.com)

Green P Parking  
[parking.greenp.com](http://parking.greenp.com)

Toronto Transit Commission (local buses & subways)  
[ttc.ca](http://ttc.ca)

## Housing

---

Canpages Real Estate  
[canpages.ca/real-estate](http://canpages.ca/real-estate)

Gottarent.com  
[gottarent.com](http://gottarent.com)

RentCanada  
[rentcanada.com](http://rentcanada.com)

Viewit.ca  
[viewit.ca](http://viewit.ca)

# Contacts

## Academic Fellowship and Graduate Studies Program

[dfcm.utoronto.ca](http://dfcm.utoronto.ca) > Learners > Fellows & Graduate Students

Dr. Abbas Ghavam-Rassoul	Program Director, MScCH (HPTE), MEF and CTC	<a href="mailto:a.ghavam.rassoul@utoronto.ca">a.ghavam.rassoul@utoronto.ca</a>	Tel: 416-978-1914
Dr. Curtis Handford	Program Director, MPH (FCM), MScCH (FCM), AF and CRC	<a href="mailto:curtis.handford@utoronto.ca">curtis.handford@utoronto.ca</a>	Tel: 416-978-1914
Diana Kam	Program Coordinator	<a href="mailto:healthteach.grad@utoronto.ca">healthteach.grad@utoronto.ca</a>	Tel: 416-978-8363
Ancy Jacob	Program Assistant	<a href="mailto:familymed.grad@utoronto.ca">familymed.grad@utoronto.ca</a>	Tel: 416-978-1914

## DFCM Library

[dfcm.utoronto.ca/library.htm](http://dfcm.utoronto.ca/library.htm)

Robyn Butcher	DFCM Librarian	<a href="mailto:dfcm.librarian@utoronto.ca">dfcm.librarian@utoronto.ca</a>	Tel: 416-978-5606
---------------	----------------	--	-------------------

## Emergency and Safety Services

[www.communitysafety.utoronto.ca/](http://www.communitysafety.utoronto.ca/) | 416-978-1485

Emergency Services			
Fire, Police, Ambulance	911	Campus Community Police	416-978-2222
Community Support			
Distress Centres	416-408-4357	Assaulted Women's Helpline	416-863-0511
Gerstein Centre (mental health crisis)	416-929-5200	Toronto Rape Crisis Centre	416-597-8808
Good2Talk	1-866-925-5454	Sexual Assault & Domestic Violence Care Centre	416-323-6040

