

COVID-19  
Community of  
Practice for Ontario  
Family Physicians



**June 24, 2022**

**Dr. Allison McGeer  
Dr. Darrell Tan**

***What's new with COVID-19 and Monkeypox***



Family & Community Medicine  
UNIVERSITY OF TORONTO

Ontario College of  
Family Physicians



# What's new with COVID-19 and Monkeypox

Moderator: Dr. Tara Kiran

Fidani Chair, Improvement and Innovation

Department of Family and Community Medicine, University of Toronto

Panelists:

- Dr. Allison McGeer, Toronto, ON
- Dr. Darrell Tan, Toronto, ON

The COVID-19 Community of Practice for Ontario Family Physicians is a one-credit-per-hour Group Learning program that has been certified for up to a total of 32 credits.

# Land Acknowledgement

We acknowledge that the lands on which we are hosting this meeting include the traditional territories of many nations.

The OCFP and DFCM recognize that the many injustices experienced by the Indigenous Peoples of what we now call Canada continue to affect their health and well-being. The OCFP and DFCM respect that Indigenous people have rich cultural and traditional practices that have been known to improve health outcomes.

I invite all of us to reflect on the territories you are calling in from as we commit ourselves to gaining knowledge; forging a new, culturally safe relationship; and contributing to reconciliation.

# Changing the way we work

## *A community of practice for family physicians during COVID-19*

At the conclusion of this series participants will be able to:

- Identify the current best practices for delivery of primary care within the context of COVID-19 and how to incorporate into practice.
- Describe point-of-care resources and tools available to guide decision making and plan of care.
- Connect with a community of family physicians to identify practical solutions for their primary care practice under current conditions.

### **Disclosure of Financial Support**

This CPD program has received in-kind support from the Ontario College of Family Physicians and the Department of Family and Community Medicine, University of Toronto in the form of logistical and promotional support.

### **Potential for conflict(s) of interest:**

N/A

### **Mitigating Potential Bias**

- The Scientific Planning Committee has full control over the choice of topics/speakers.
- Content has been developed according to the standards and expectations of the Mainpro+ certification program.
- The program content was reviewed by a three-member national/scientific planning committee.

*Planning Committee:* Dr. Tara Kiran (DFCM), Dr. Elizabeth Muggah (OCFP); Kimberly Moran (OCFP) and Mina Viscardi-Johnson (OCFP)

### **Previous webinars & related resources:**

<https://www.dfcm.utoronto.ca/covid-19-community-practice/past-sessions>



## **Dr. Allison McGeer – Panelist**

Microbiologist, Infectious Disease Specialist, Mount Sinai Hospital



## **Dr. Darrell Tan – Panelist**

Infectious Diseases Physician, Clinician Scientist, St. Michael's Hospital



## **Dr. David Kaplan – Co-Host**

**Twitter:** @davidkaplanmd

Family Physician, North York Family Health Team and  
Vice President, Quality, Ontario Health

# Speaker Disclosure

- Faculty Name: **Dr. Allison McGeer**
- Relationships with financial sponsors: Novavax, Medicago, Sanofi-Pasteur, GSK, Merck
  - Grants/Research Support: Sanofi-Pasteur, Pfizer
  - Speakers Bureau/Honoraria: Moderna, Pfizer, AstraZeneca, Novavax, Medicago, Sanofi-Pasteur, GSK, Merck
  - Others: N/A
  
- Faculty Name: **Dr. Darrell Tan**
- Relationships with financial sponsors: N/A
  - Grants/Research Support: Abbvie, Gilead, Viiv Healthcare, Glaxo Smith Kline, Canada Research Chairs program
  - Speakers Bureau/Honoraria: N/A
  - Others: N/A

# Speaker Disclosure

- Faculty Name: **Dr. David Kaplan**
- Relationships with financial sponsors:
  - Grants/Research Support: N/A
  - Speakers Bureau/Honoraria: Ontario College of Family Physicians
  - Others: Ontario Health (employee)
  
- Faculty Name: **Dr. Tara Kiran**
- Relationships with financial sponsors:
  - Grants/Research Support: St. Michael's Hospital, University of Toronto, Health Quality Ontario, Canadian Institute for Health Research, Ontario Ministry of Health, Gilead Sciences Inc (re: Hepatitis C), Staples Canada (re: Patient Engagement)
  - Speakers Bureau/Honoraria: Ontario College of Family Physicians, Ontario Medical Association, Doctors of BC, Nova Scotia Health Authority, Osgoode Hall Law School, Centre for Quality Improvement and Patient Safety, Vancouver Physician Staff Association, University of Ottawa, Ontario Health, Canadian Medical Association

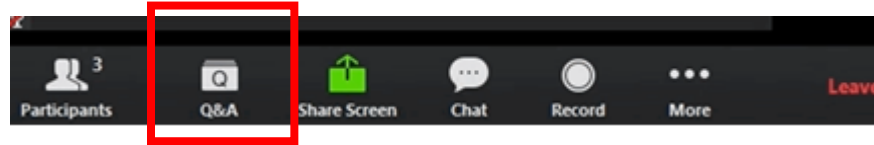
# Outline for Today

- Latest on COVID, new variants, kids vaccine + more
- Monkeypox update

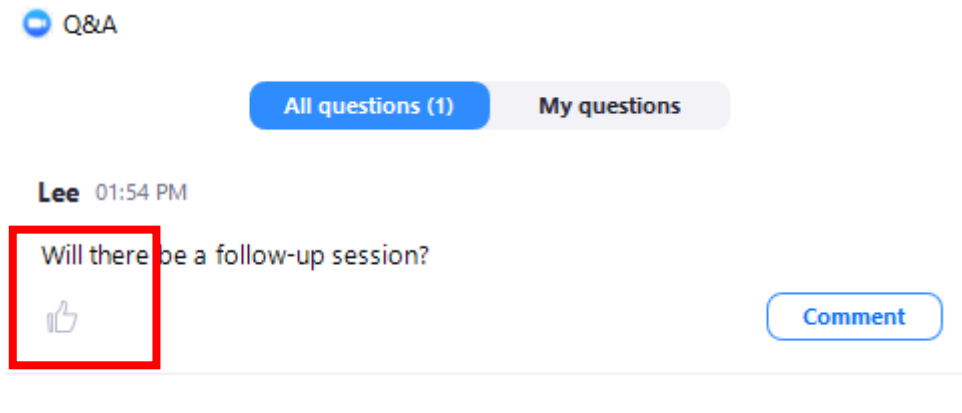


# How to Participate

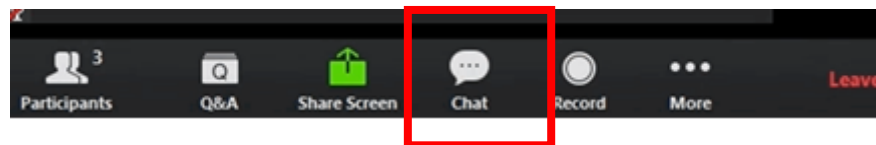
- All questions should be asked using the Q&A function at the bottom of your screen.



- Press the thumbs up button to upvote another guests questions. Upvote a question if you want to ask a similar question or want to see a guest's question go to the top and catch the panels attention.



- Please use the chat box for networking purposes only.





**Dr. Allison McGeer– Panelist**

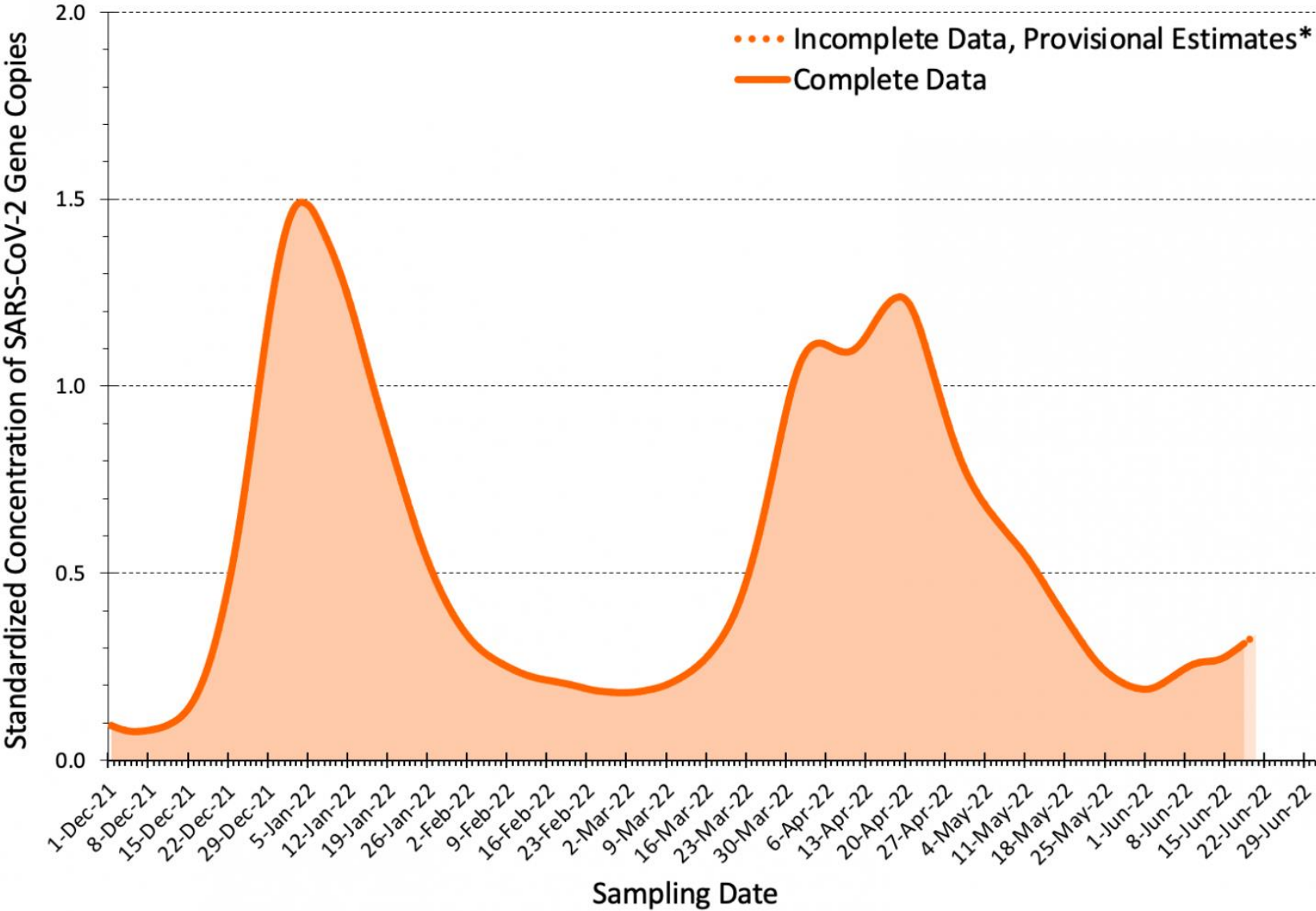
Microbiologist, Infectious Disease Specialist, Mount Sinai Hospital



**Dr. Darrell Tan– Panelist**

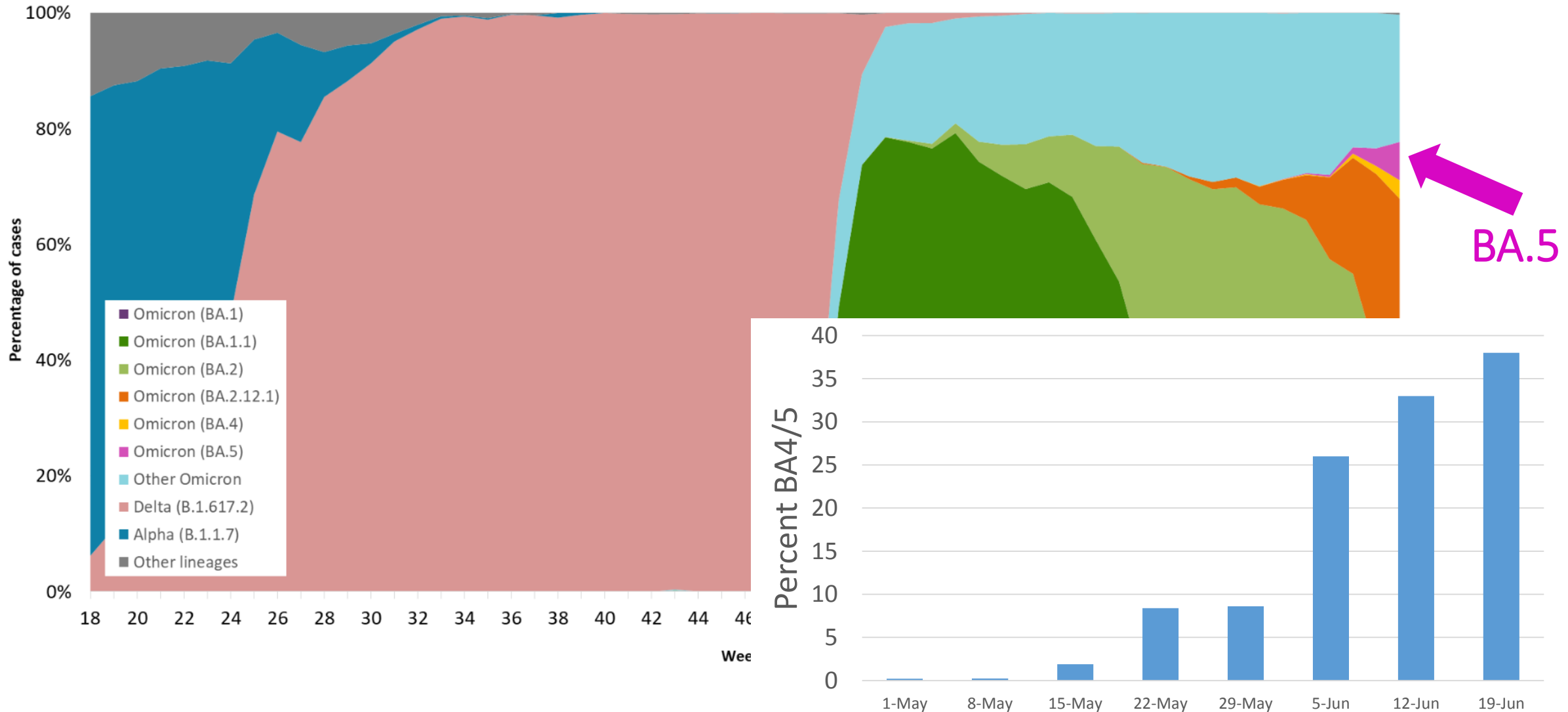
Infectious Diseases Physician, Clinician Scientist, St. Michael's Hospital

# Province-Wide COVID-19 Wastewater Signal



- Release of mask mandates?
- Emergence of BA.4/BA.5

# Emergence of BA.4 and BA.5 in Ontario

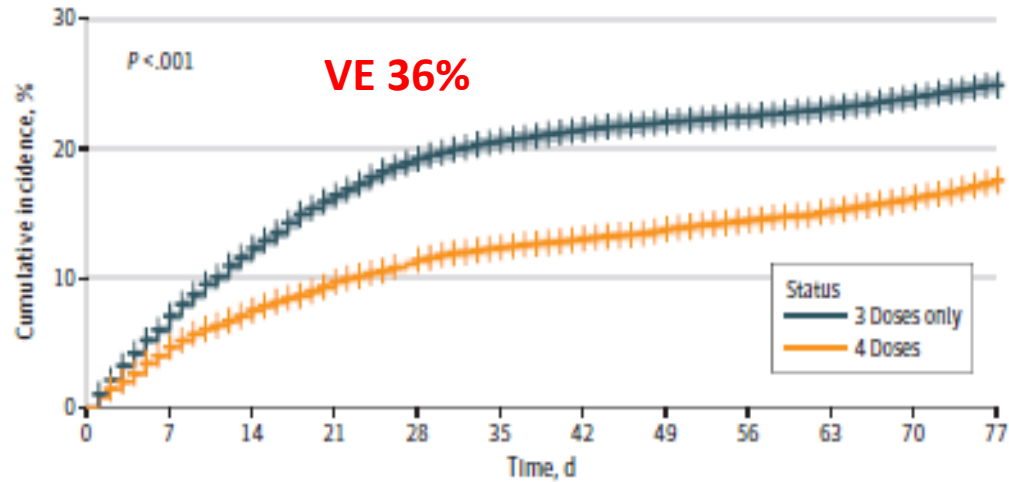


# Comparing vaccines for 6-59month old children

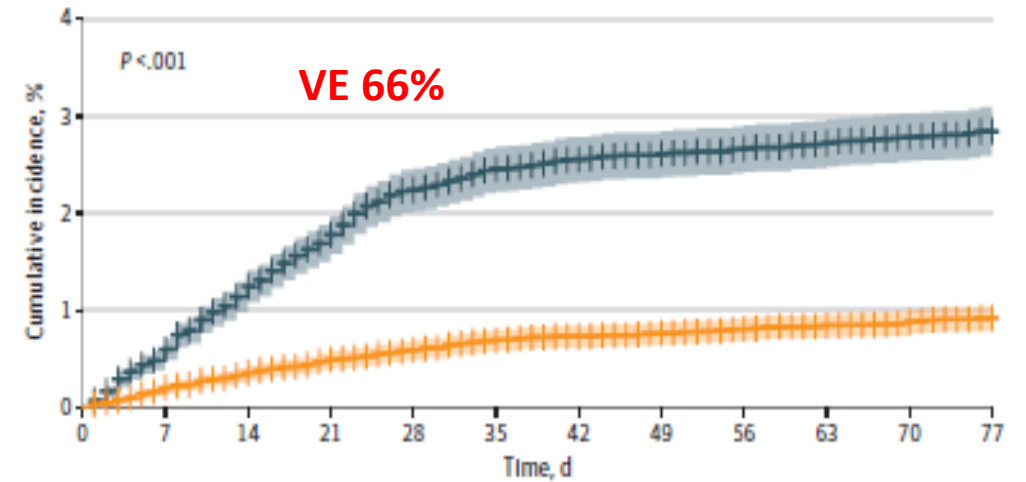
	<b>Pfizer</b>	<b>Moderna</b>
Dose	3 doses, each 3ug	2 doses, each 25ug
Timing	0, 3 weeks, 11 weeks	0, 4 weeks
Effectiveness	0 after 2 doses 80% but with VERY wide confidence limits (FDA says unmeasured)	50% ages 6-23 months 37% ages 2-5 years
Side effects	1-3% No difference in fever compared to placebo	8% fever 0.9% swollen lymph nodes 5% nausea/vomiting

# 4<sup>vs</sup> 3 doses Pfizer in residents LTC, Israel

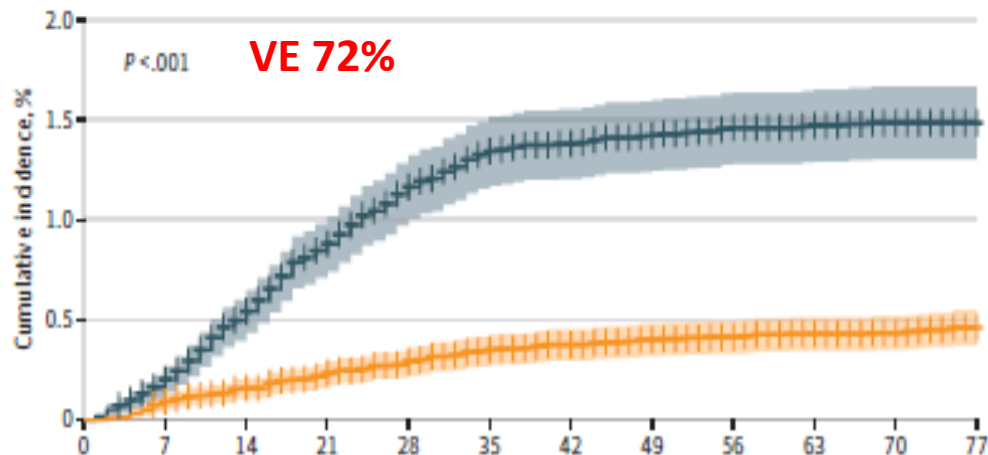
**A** Overall SARS-CoV-2 infection



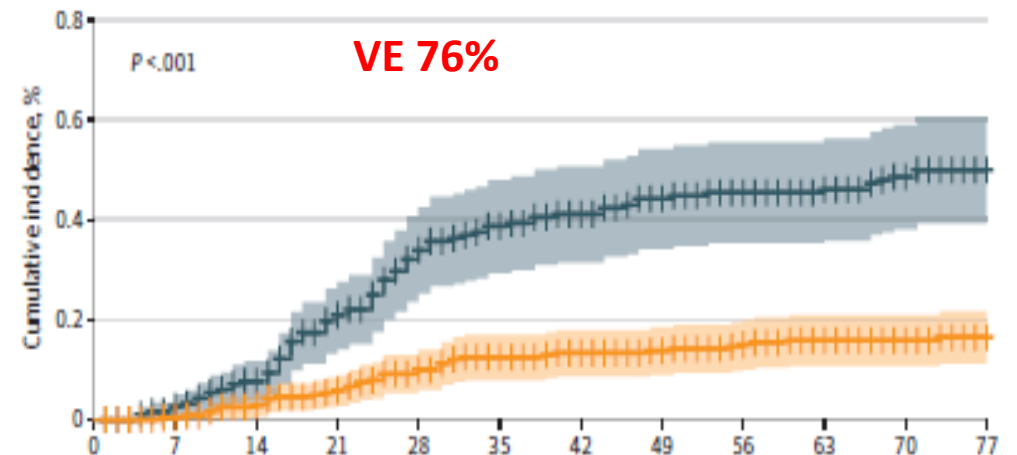
**B** Hospitalizations for mild to moderate COVID-19



**C** Hospitalizations for severe COVID-19



**D** COVID-19-related deaths



# NMTR-RIT in standard risk patients (more science by press release)

Outcome	Results
Alleviation of symptoms	Did not meet endpoint
Hospitalization/death	5/576 NMTR-RIT vs. 10/569 placebo
Hospitalization/death – high risk	3/362 NMTR-RIT vs. 7/366 placebo
Medical visits	62% reduction



A panoramic view of the Toronto skyline from the water, featuring the CN Tower and various skyscrapers under a blue sky with scattered clouds. The water in the foreground is calm, reflecting the buildings and sky.

# A practical approach to monkeypox

**Darrell H. S. Tan MD FRCPC PhD**

**June 24, 2022**



ADVERTISEMENT

HEALTH | News

# Monkeypox fears could stigmatize LGBTQ2S+ community, expert says



ADVERTISEMENT

gmsH  
GAY MEN'S SEXUAL HEALTH ALLIANCE

Alliance Member Sign In

ABOUT NEWS PUBLICATIONS & RESOURCES CAMPAIGNS CONTACT US

# Monkeypox: What We Know

News > Monkeypox: What We Know

May 20, 2022

Monkeypox: What We Know

# Key messages

- **Suspect monkeypox** when seeing the combination of flulike symptoms ± skin lesions ± lymphadenopathy, especially in gay, bi, other MSM
- **Diagnose monkeypox** using PCR but ensure appropriate specimen types, IPAC considerations, and ability to safely transport specimens
- **Vaccine is available** through Toronto Public Health/local PHU for gay, bi, other MSM meeting risk criteria, and close contacts of cases

# Traditional teaching on natural history

Stage	Incubation period	Fever stage	Rash stage	Recovery
Timeline	5-21 days	1-4 days	2-4 weeks	Days to weeks
Clinical findings		Enanthem, Lymphadenopathy near end	Macule → Papule → Vesicle → Pustule	Crusted and healing
Infectivity	Nil	Low	High	Nil

# Rash of Monkeypox

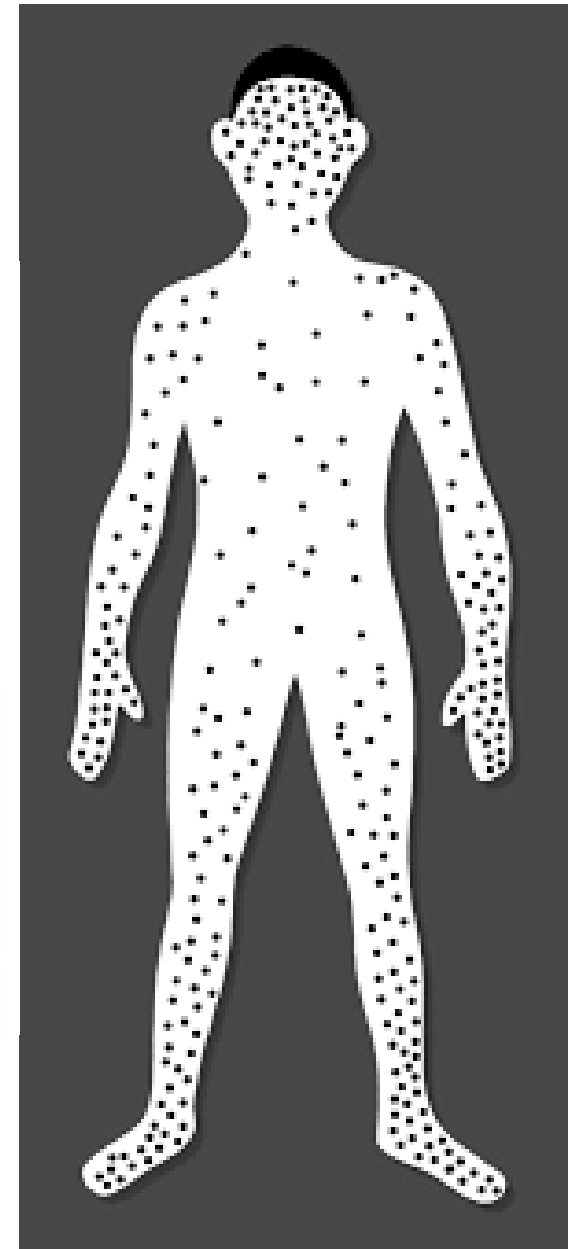
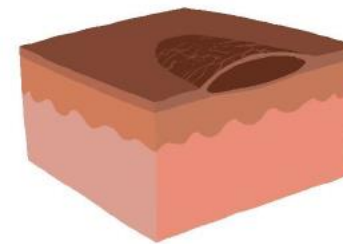
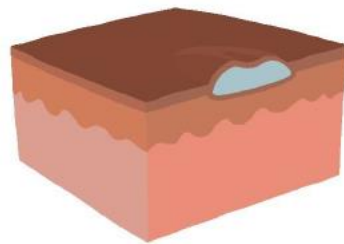
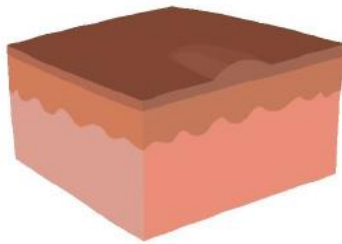
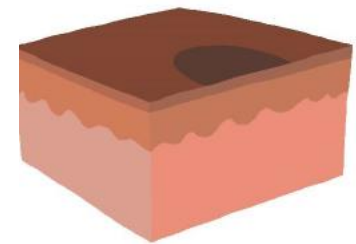
Macule

Papule

Vesicle

Pustule

Crust





# Lesions at site of inoculation



# Lesions at site of inoculation





# Local lymphadenopathy



- Cervical
- Inguinal

# Disseminated rash – multiple stages at once





# Disseminated rash – lesion evolution





# Disseminated rash





# Involvement of palms and soles



# Differential diagnosis

## Genital ulcer disease

- Primary syphilis
- HSV-1 or 2
- LGV
- Chancroid (*H. ducreyi*)

## Pharyngitis

- Mononucleosis
- Group A Strep
- HIV
- SARS-CoV-2

## Systemic manifestations + rash

- VZV
- Enterovirus (Hand foot mouth)
- Disseminated gonococcus
- HIV

- Consider co-infections: Gonorrhoea, chlamydia, syphilis, HIV, hepatitis

# Monkeypox specimen collection

- Main diagnostic test = PCR
- Febrile stage: Blood (red top), NP swab, urine
- **Skin lesions:**
  - Vesicle roof, & crusts into dry Falcon tube
  - Viral swabs: in 1mL viral transport media
- Serology NOT currently available



# Logistics of seeing patients

- **IPAC:** Private rooms, appropriate PPE (N95, shield, gown, gloves), clean between patients
- Category B pathogen therefore staff performing specimen packaging should have training in **Transportation of Dangerous Goods**
- If site not set-up for this, then refer (remotely) to
  - Local infectious diseases
  - Toronto Public Health STI clinic
  - Other sites TBA – TPH/local PHU disseminating this info

# Vaccine

## What

- Imvamune®
- 3<sup>rd</sup> generation replication-deficient live virus vaccine against smallpox

## How

- Mass vaccination clinics organized by Toronto Public Health/local PHU

## Who

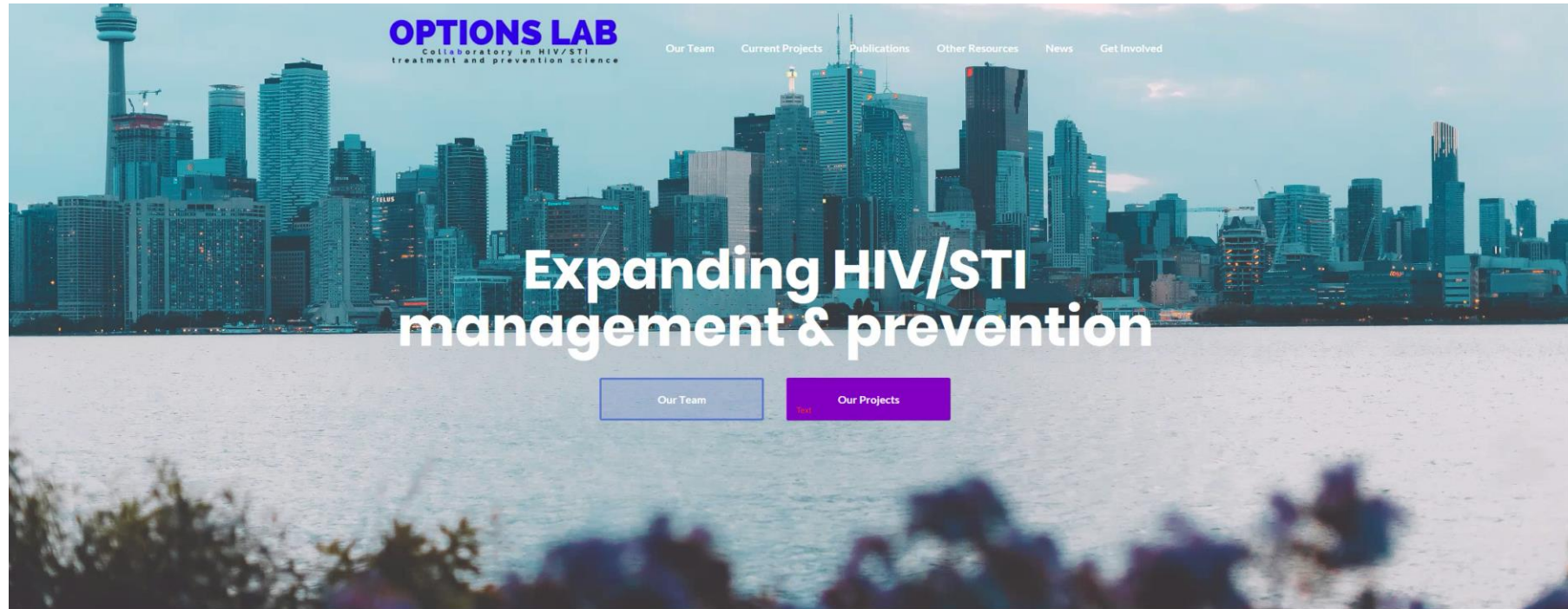
- **Trans or cisgender individuals who self-identify as GBM** and at least one of:
- Have received a diagnosis of **bacterial STI** (i.e., chlamydia, gonorrhea, syphilis) in the past 2 months;
- Have had **2 or more sexual partners** within the past 21 days or may be planning to;
- Have attended **venues for sexual contact** within the past 21 (e.g., bath houses, sex clubs) or may be planning to, or who work/volunteer in these settings;
- Have had **anonymous/casual sex** in the past 21 days (e.g., using online dating/ hookup apps) or may be planning to;
- Engage in **sex work** or may be planning to, and their sexual contacts.

# Key messages

- **Suspect monkeypox** when seeing the combination of flulike symptoms ± skin lesions ± lymphadenopathy, especially in gay, bi, other MSM
- **Diagnose monkeypox** using PCR but ensure appropriate specimen types, IPAC considerations, and ability to safely transport specimens
- **Vaccine is available** through Toronto Public Health/local PHU for gay, bi, other MSM meeting risk criteria, and close contacts of cases



[www.optionslab.ca](http://www.optionslab.ca)  
[darrell.tan@gmail.com](mailto:darrell.tan@gmail.com)



## About

We are an interdisciplinary research team dedicated to bringing together community, academic, clinical, and policy partners to find and implement new and better options for HIV and STI treatment and prevention.





Thank you



Regional  
HIV/AIDS  
Connection



# Masking

- **Provincial mandate lifted in most settings – June 11**
- **Required** in long-term care and retirement homes, and **recommended** in congregate living settings
- Organizations have **discretion to mandate masking** by both staff and patients
- OCFP recommends **continued masking in community practices** given elderly, immunocompromised and other vulnerable patients

# Masking: Resources

## OCFP

- **Masking in community practices – tips and resources:**  
<https://www.ontariofamilyphysicians.ca/tools-resources/covid-19-resources/clinical-care-office-readiness/ocfp-masking-policies.pdf>
- **Masking poster** for clinics:  
<https://www.ontariofamilyphysicians.ca/tools-resources/covid-19-resources/clinical-care-office-readiness/ocfp-mask-sign.pdf>
- Summary **IPAC/PPE guidelines:**  
<https://www.ontariofamilyphysicians.ca/tools-resources/covid-19-resources/clinical-care-office-readiness/ipac-summary.pdf>

## OMA (log in to access)

- Adaptable template for **staff masking policy** :  
<https://www.oma.org/uploadedfiles/oma/media/member/membermappedpdfs/practice-professional-support/patient-care/oma-vaccination-masking-policy-for-medical-practice-template.docx>

# Outpatient Post-COVID Condition rehabilitation programs in Ontario

## North Ontario

- Health Sciences North – [Community Care & Rehabilitation](#)
- St. Joseph's Care Group (Thunder Bay) – [Post-COVID-19 Outpatient Clinic](#)

## West Ontario

- Halton Healthcare: [Post COVID-19 Syndrome Clinic](#)
- Hamilton Health Sciences Centre – [Regional Rehabilitation Centre](#)
- Hôtel-Dieu Grace Healthcare – [COVID Recovery Program](#)
- [Hotel Dieu Shaver Health and Rehabilitation Centre](#)
- [St. Joseph's Health Care London](#) – Post-acute COVID-19 Program

## East Ontario

- [Providence Care Hospital \(Kingston\)](#)
- The Ottawa Hospital – [Rehabilitation Centre](#)

## South Ontario

- [Runnymede Healthcare Centre](#)
- Sinai Health System – [Hennick Bridgepoint Hospital](#)
- Toronto Grace Health Centre: [Pulmonary Rehabilitation Clinic](#)
- UHN – [Toronto Rehabilitation Institute \(TRI\)](#)
- Unity Health Toronto – Providence Healthcare: [Outpatient Post-COVID Condition Rehabilitation Program](#)

**Source:** Dr. Ashley Verduyn, Family Physician, Chief and Director of Medical Affairs, Providence Health Care, Toronto, ON (February 18, 2022 COVID-19 Community of Practice)



# eConsult

<http://www.otnhub.ca/>

**Source:** Dr. Ashley Verduyn,  
Family Physician, Chief and  
Director of Medical Affairs,  
Providence Health Care, Toronto,  
ON (February 18, 2022 COVID-19  
Community of Practice)



## Access to COVID-19 and Post-COVID Condition Advice through eConsult

The Ontario eConsult Service, accessed on the OTNhub and a part of the **Ontario eServices Program**, is a secure web-based tool, that allows physicians and nurse practitioners timely access to specialist advice.

The **Ontario eConsult Service, accessed on the OTNhub.ca**, offers easy and timely access to specialist advice, including questions related to COVID-19 and Post COVID-Conditions.

The following specialties are **now available** through the **BASE™ Managed Specialty option** through the **COVID-19** and **Public Health specialty categories**:

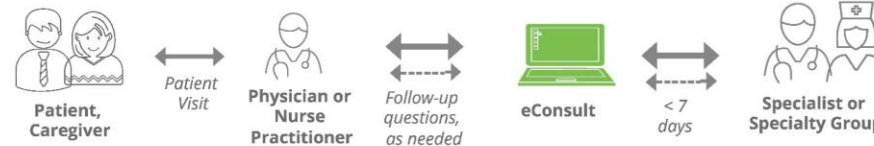
- COVID-19 Infectious Diseases
- COVID-19 Vaccine - Public Health
- COVID-19 Vaccine - Allergy/Immunology
- COVID-19 and Respiriology
- COVID-19 and Autoimmune Disorders
- COVID-19 and Pregnancy
- Post-COVID Condition – Chronic Fatigue Syndrome, Environmental Health Group
- Post-COVID Condition – Internal Medicine
- Post-COVID Condition – Neurology
- Post-COVID Condition - Respiratory Recovery Group
- Post-COVID Condition – Physical Medicine & Rehabilitation

The COVID-19 specialties are the only groups that allow for population-based, non-patient specific clinical questions, in addition to the ability to ask patient-specific eConsult questions.



Check out our guide on sending **Vaccine Allergy questions**

*"Even more valuable to have this service during the COVID-19 pandemic and restrictions to regular clinic visits!"*  
- eConsult user and Primary Care Provider



- Need a refresher on how to submit an eConsult? Watch our [video](#) or contact us at [eConsultCOE@toh.ca](mailto:eConsultCOE@toh.ca) for support.
- To sign up for eConsult, visit [www.otnhub.ca](http://www.otnhub.ca) or complete our [Intake Form](#) and a member from our team will assist you.

For more information visit [www.eConsultOntario.ca](http://www.eConsultOntario.ca) or contact us [eConsultCOE@toh.ca](mailto:eConsultCOE@toh.ca).

# NEW: COVID-19 Vaccination Tool Kit for Health Care Providers

The Public Health Agency of Canada has launched a [tool kit](#) for health care providers designed to provide evidence-informed resources to support informed choices and constructive dialogue with patients about COVID-19 vaccines authorized for use in Canada.

More information:

Government of Canada:  
[COVID-19: For health professionals](#)



COVID-19 Vaccination Resources  
Ressources sur la vaccination contre la COVID-19

**Tool Kit for Health  
Care Providers**

**Trousse à outils pour  
les fournisseurs de  
soins de santé**

English > Français >

# Shortage of infant formulas for infants with food allergies and certain medical conditions

Important information and resources below:

**Fact Sheet for Families and Caregivers:** Health Canada has recently updated their website with a fact sheet for families and caregivers during the shortage of formula for infants with food allergies: <https://www.canada.ca/en/health-canada/services/infant-care/infant-formula/shortage.html>.

**Health Canada's Interim Policy:** Health Canada published an [Interim policy on the importation and sale of infant formulas, human milk fortifiers \(HMF\) and metabolic products for inborn errors of metabolism to mitigate shortages](#). - [Canada.ca](#) on March 10, 2022 to allow additional products to be imported from other countries to mitigate the effects of the shortage.

**National Clinical Decision Tree:** A national clinical decision tree entitled, "[Use of Specialized Infant Formula during a Shortage](#)" has recently been developed to support health care providers across the country to temporarily guide treatment decisions, and support families and caregivers to make appropriate formula choices while rationing the use of specialized infant formulas.

**Ontario's Inherited Metabolic Diseases (IMD) Program:** Since March 2022, the Ontario Ministry of Health has added over 10 metabolic formula products to the list of products reimbursed through the Inherited Metabolic Diseases (IMD) Program, to provide patients with alternatives during this shortage.



# Questions?

Webinar recording and curated Q&A will be posted soon

<https://www.dfcu.utoronto.ca/covid-19-community-practice/past-sessions>

Our next Community of Practice: **July 8, 2022**

Contact us: [ocfpcme@ocfp.on.ca](mailto:ocfpcme@ocfp.on.ca)

Visit: <https://www.ontariofamilyphysicians.ca/tools-resources/covid-19-resources>

The COVID-19 Community of Practice for Ontario Family Physicians is a one-credit-per-hour Group Learning program that has been certified for up to a total of 32 credits..

**Post session survey will be emailed to you. Mainpro+ credits will be entered for you with the information you provided during registration.**