

# COVID-19 Community of Practice for Ontario Family Physicians

**May 5, 2023**

**Dr. Sarah Wilson  
Dr. Daniel Warshafsky  
Dr. Marilyn Crabtree**



***Vaccine preventable diseases and e-consults***



Family & Community Medicine  
UNIVERSITY OF TORONTO

Ontario College of  
Family Physicians



# Vaccine preventable diseases and e-consults

## Moderator:

- Dr. Ali Damji, Division Head, Primary Care, Trillium Health Partners and Family Physician, Credit Valley Family Health Team, Mississauga, ON

## Panelists:

- Dr. Sarah Wilson, Toronto, ON
- Dr. Daniel Warshafsky, Toronto, ON
- Dr. Marilyn Crabtree, Great River OHT

## Co-host:

- Dr. Mekalai Kumanan, Cambridge, ON

The COVID-19 Community of Practice for Ontario Family Physicians is a one-credit-per-hour Group Learning program that has been certified for up to a total of 32 credits.

# Land Acknowledgement

We acknowledge that the lands on which we are hosting this meeting include the traditional territories of many nations.

The OCFP and DFCM recognizes that the many injustices experienced by the Indigenous Peoples of what we now call Canada continue to affect their health and well-being. The OCFP and DFCM respects that Indigenous people have rich cultural and traditional practices that have been known to improve health outcomes.

I invite all of us to reflect on the territories you are calling in from as we commit ourselves to gaining knowledge; forging a new, culturally safe relationship; and contributing to reconciliation.

# Simon, Indigenous leaders to meet King Charles ahead of coronation

Meeting arranged by Gov. Gen. Mary Simon; ITK's Obed will also meet King



Inuit Tapiriit Kanatami president Natan Obed (left) is among several national Indigenous leaders who will meet with Gov. Gen. Mary Simon and King Charles on Thursday. The coronation of King Charles will take place on Saturday at Westminster Abbey. (Photos by Corey Larocque, Jeff Pelletier)

# Changing the way we work

## *A community of practice for family physicians during COVID-19*

At the conclusion of this series participants will be able to:

- Identify the current best practices for delivery of primary care within the context of COVID-19 and how to incorporate into practice.
- Describe point-of-care resources and tools available to guide decision making and plan of care.
- Connect with a community of family physicians to identify practical solutions for their primary care practice under current conditions.

### **Disclosure of Financial Support**

This CPD program has received in-kind support from the Ontario College of Family Physicians and the Department of Family and Community Medicine, University of Toronto in the form of logistical and promotional support.

### **Potential for conflict(s) of interest:**

N/A

### **Mitigating Potential Bias**

- The Scientific Planning Committee has full control over the choice of topics/speakers.
- Content has been developed according to the standards and expectations of the Mainpro+ certification program.
- The program content was reviewed by a three-member national/scientific planning committee.

*Planning Committee:* Dr. Tara Kiran (DFCM), Dr. Mekalai Kumanan (OCFP); Dr. Ali Damji (DFCM), Dr. Liz Muggah (OH), Kimberly Moran (OCFP), Mina Viscardi-Johnson (OCFP), Julia Galbraith (OCFP), Marisa Schwartz (DFCM), Erin Plenert (DFCM)

Previous webinars & related resources:

<https://www.dfcm.utoronto.ca/covid-19-community-practice/past-sessions>





## **Dr. Sarah Wilson – Panelist**

Public Health Physician, Public Health Ontario; Associate Professor, Dalla Lana School of Public Health, University of Toronto



## **Dr. Daniel Warshafsky – Panelist**

Associate Chief Medical Officer of Health at the Office of the Chief Medical Officer of Health, Toronto, ON



## **Dr. Marilyn Crabtree – Panelist**

Clinical Lead – Great River OHT/ESO du Grand Fleuve



## **Dr. Mekalai Kumanan– Co-Host**

President, Ontario College of Family Physicians, Family Physician, Two Rivers Family Health Team, Chief of Family Medicine, Cambridge, ON

# Speaker Disclosure

- Faculty Name: **Dr. Sarah Wilson**
- Relationships with financial sponsors:
  - Grants/Research Support: Canadian Immunity Task Force of the Public Health Agency of Canada
  - Speakers Bureau/Honoraria: N/A
  - Others: N/A
  - Membership on advisory boards or speakers' bureaus: National Advisory Committee on Immunization (NACI)
- Faculty Name: **Dr. Daniel Warshafsky**
- Relationships with financial sponsors:
  - Grants/Research Support: N/A
  - Speakers Bureau/Honoraria: N/A
  - Others: N/A
- Faculty Name: **Dr. Marilyn Crabtree**
- Relationships with financial sponsors:
  - Grants/Research Support: N/A
  - Speakers Bureau/Honoraria: FMS Speaker, Ontario College of Family Physicians
  - Others: Contract work for the following programs - Great River OHT, Ontario eServices, AccessMHA Multi-Regional Support team
  - Membership on advisory boards or speakers' bureaus: Aetonix, Treehouse, OMA (Member OMA Forms Committee, Member Relativity Advisory Committee, Member at Large District 8, Secretary-Treasurer Winchester-Kemptville Medical Society (volunteer))

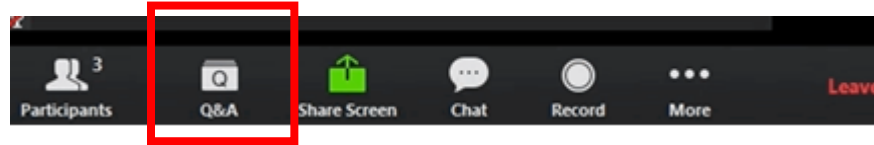
# Speaker Disclosure

- Faculty Name: **Dr. Ali Damji**
- Relationships with financial sponsors:
  - Grants/Research Support: N/A
  - Speakers Bureau/Honoraria: Ontario College of Family Physicians
  - Others: N/A
  
- Faculty Name: **Dr. Mekalai Kumanan**
- Relationships with financial sponsors:
  - Grants/Research Support: N/A
  - Speakers Bureau/Honoraria: Ontario College of Family Physicians
  - Others: Chief of Family Medicine, Cambridge Memorial Hospital

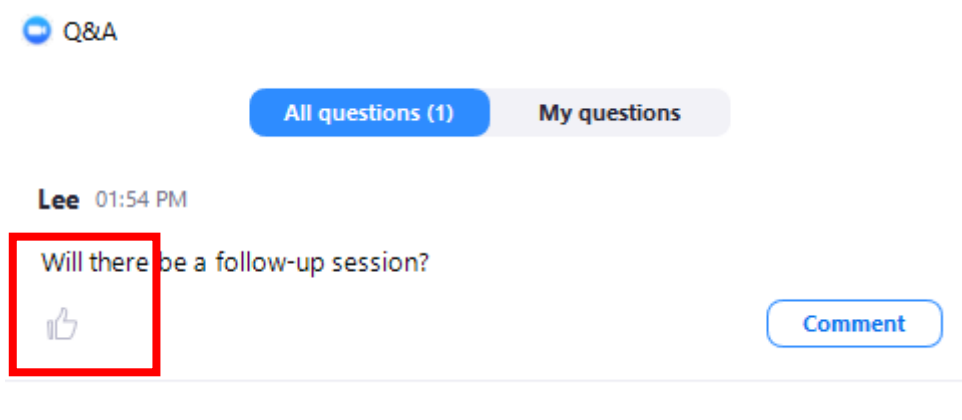


# How to Participate

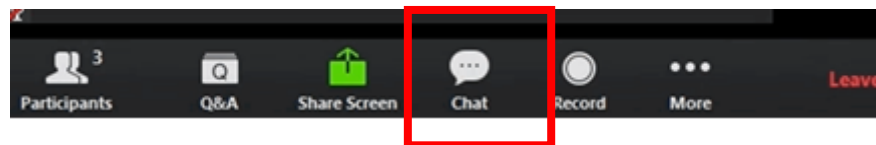
- All questions should be asked using the Q&A function at the bottom of your screen.



- Press the thumbs up button to upvote another guests questions. Upvote a question if you want to ask a similar question or want to see a guest's question go to the top and catch the panels attention.



- Please use the chat box for networking purposes only.





## **Dr. Sarah Wilson – Panelist**

Public Health Physician, Public Health Ontario; Associate Professor, Dalla Lana School of Public Health, University of Toronto



## **Dr. Daniel Warshafsky – Panelist**

Associate Chief Medical Officer of Health at the Office of the Chief Medical Officer of Health, Toronto, ON



## **Dr. Marilyn Crabtree – Panelist**

Clinical Lead – Great River OHT/ESO du Grand Fleuve



## **Dr. Mekalai Kumanan– Co-Host**

President, Ontario College of Family Physicians, Family Physician, Two Rivers Family Health Team, Chief of Family Medicine, Cambridge, ON

# Hot topics in Vaccine-Preventable Diseases including measles, pertussis, invasive pneumococcal disease

Dr. Sarah Wilson

OCFP Community of Practice

May 5, 2023



# Measles

# Measles

[Home](#) / [News](#) / Countries in the European Region stepping up to stop the spread of measles as cases in 2023 already exceed all those in 2022



**Countries in the European Region stepping up to stop the spread of measles as cases in 2023 already exceed all those in 2022**

Français

Русский

Deutsch

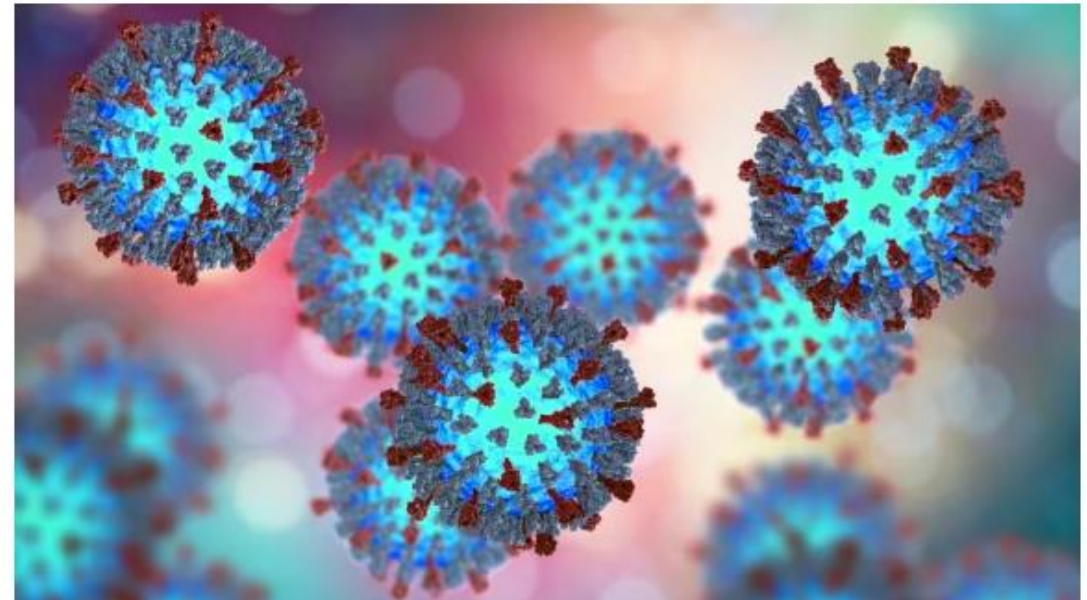
<https://www.who.int/europe/news/item/26-04-2023-countries-in-the-european-region-stepping-up-to-stop-the-spread-of-measles-as-cases-in-2023-already-exceed-all-those-in-2022>

Toronto

## Toronto Public Health warns of possible measles exposure after lab-confirmed case

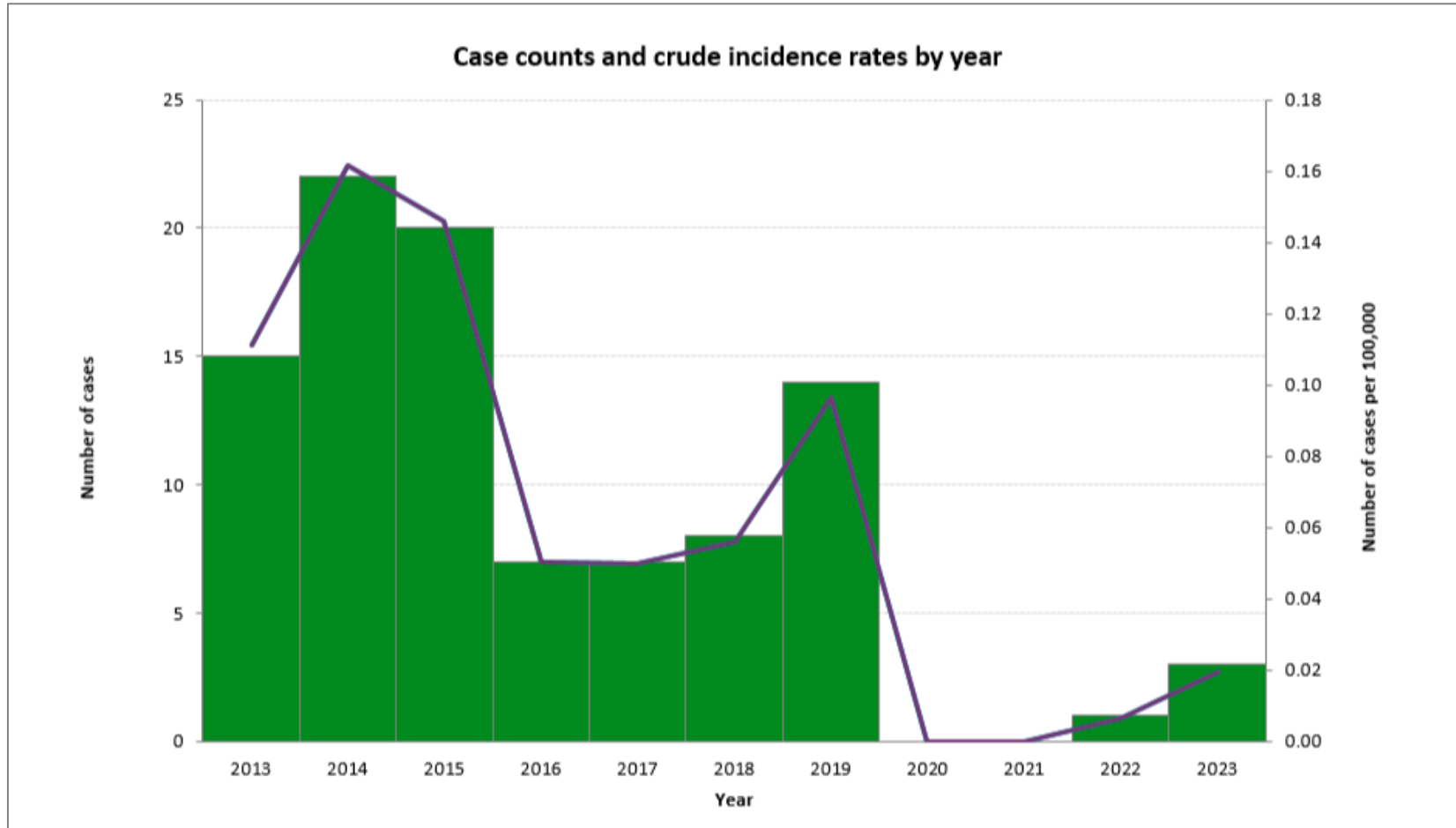
Public health agency says people may have been exposed at 2 hospitals and a clinic in April

CBC News - Posted: Apr 26, 2023 12:27 PM EDT | Last Updated: April 26



Officials are following up with known contacts who may have been exposed to a travel-related case of the measles, Toronto Public Health says. (Shutterstock)

# Measles in Ontario



- 5 measles cases in Canada (as of May 1 2023)
  - 4 of the 5 cases diagnosed in ON
- All 2023 cases (as of May 1) are travel-associated:
  - India
  - Pakistan
  - Afghanistan

<https://www.publichealthontario.ca/data-and-analysis/commonly-used-products/reportable-disease-trends-annually>

<https://www.canada.ca/en/public-health/services/publications/diseases-conditions/measles-rubella-surveillance/2023/week-15.html>



# Measles vaccination recommendations prior to travel outside Canada

Age group	Advice
Adults born before 1970	<ul style="list-style-type: none"><li>• 1 dose of measles vaccine (total)<ul style="list-style-type: none"><li>• Unless lab evidence of immunity or history of lab-confirmed measles</li></ul></li><li>• <i>Vaccination recommended over serology</i></li></ul>
Travelers born in/after 1970 and 12 months of age and older	<ul style="list-style-type: none"><li>• 2 doses of measles vaccine (total)</li></ul>
Travelling infants (6 months to 12 months)	<ul style="list-style-type: none"><li>• Vaccine may be given as early as 6 months</li><li>• 2 additional doses after 12 months of age if vaccinated prior to first birthday</li></ul>

Doses are publicly funded in Ontario (outlined in high risk tables)  
MMR or MMRV can be used (note: age indications differ)

<https://www.canada.ca/en/public-health/services/publications/healthy-living/canadian-immunization-guide-part-4-active-vaccines/page-12-measles-vaccine.html#p4c11a6f>  
[https://www.health.gov.on.ca/en/pro/programs/immunization/docs/Publicly\\_Funded\\_ImmunizationSchedule.pdf](https://www.health.gov.on.ca/en/pro/programs/immunization/docs/Publicly_Funded_ImmunizationSchedule.pdf)

# Consider measles in the returning traveler but please don't order only serology!

Test	Specimen type	Collection kit	Timing of collection	Notes
Measles virus detection (PCR)	Nasopharyngeal swab	Virus respiratory kit order # 390082	Within 7 days of rash onset	For suspected cases with high index of suspicion, it may be warranted to test beyond the above time periods after discussion with PHO Laboratory
Measles virus detection (PCR)	Throat swab	Virus culture kit order # 390081	Within 7 days of rash onset	
Measles virus detection (PCR)	Urine	Sterile container	Within 14 days of rash onset	

General test requisition for all tests above

Please call your local Public Health Unit to report suspect measles cases if you are ordering these tests

<https://www.publichealthontario.ca/en/Laboratory-Services/Test-Information-Index/Measles-Diagnostic-PCR>



# Pertussis

# Pertussis

## Whooping cough cases spiking in southwestern Ontario



Whooping cough, or pertussis, can see a person's cough intensity to the point where a "whooping" sound is heard when they try to catch their breath. Photo: Unsplash.

**By The Canadian Press**

Posted Mar 27, 2023, 2:35PM EDT.

<https://toronto.citynews.ca/2023/03/27/ontario-whooping-cough-cases-symptoms-vaccine/>

## Almost half of Ontario's whooping cough cases are in this region

Officials with Southwestern Public Health are urging parents to get their children and themselves vaccinated



Alessio Donnini - CBC News - Posted: Mar 08, 2023 2:13 PM EST | Last Updated: March 8



Southwestern Public Health reported a concerning rise in cases of whooping cough Wednesday. (Winnipeg Health Region)

<https://www.cbc.ca/news/canada/london/whooping-cough-st-thomas-london-1.6772030>

# Pertussis vaccination

- Tdap vaccine in pregnancy
  - Ontario announced public funding in 2022
  - NACI recommends in every pregnancy (ideally between 27-32 weeks)
  - Safe and effective in reducing risk of infant pertussis
- Children and adolescents
  - Ensure pertussis-containing vaccines are up-to-date (especially post-pandemic)
  - Pre-school and adolescent boosters may be most at risk of not being UTD

Age	Pertussis-containing vaccine
2, 4, 6, 18 months	DTaP-IPV-Hib
4-6 yrs	Tdap-IPV
14-16 yrs	Tdap
One adult booster*	Tdap
Every pregnancy	Tdap

\*excludes doses in pregnancy

# Invasive pneumococcal disease

An Advisory Committee  
Statement (ACS)

National Advisory Committee on  
Immunization (NACI)

Public health level recommendations on the use of  
pneumococcal vaccines in adults, including the use of  
15-valent and 20-valent conjugate vaccines

PROTECTING AND EMPOWERING CANADIANS TO IMPROVE THEIR HEALTH

 Public Health  
Agency of Canada

Agence de la santé  
publique du Canada

 Canada



# New pneumococcal conjugate vaccines

## PCV15 (VAXNEUVANCE®)

- Children (6 weeks through 17 years)
- Adults 18 years+ with indication for IPD prevention

## PCV20 (PREVNAR20™)

- Adults 18 years+ with indication for IPD prevention
- Pediatric authorization expected soon

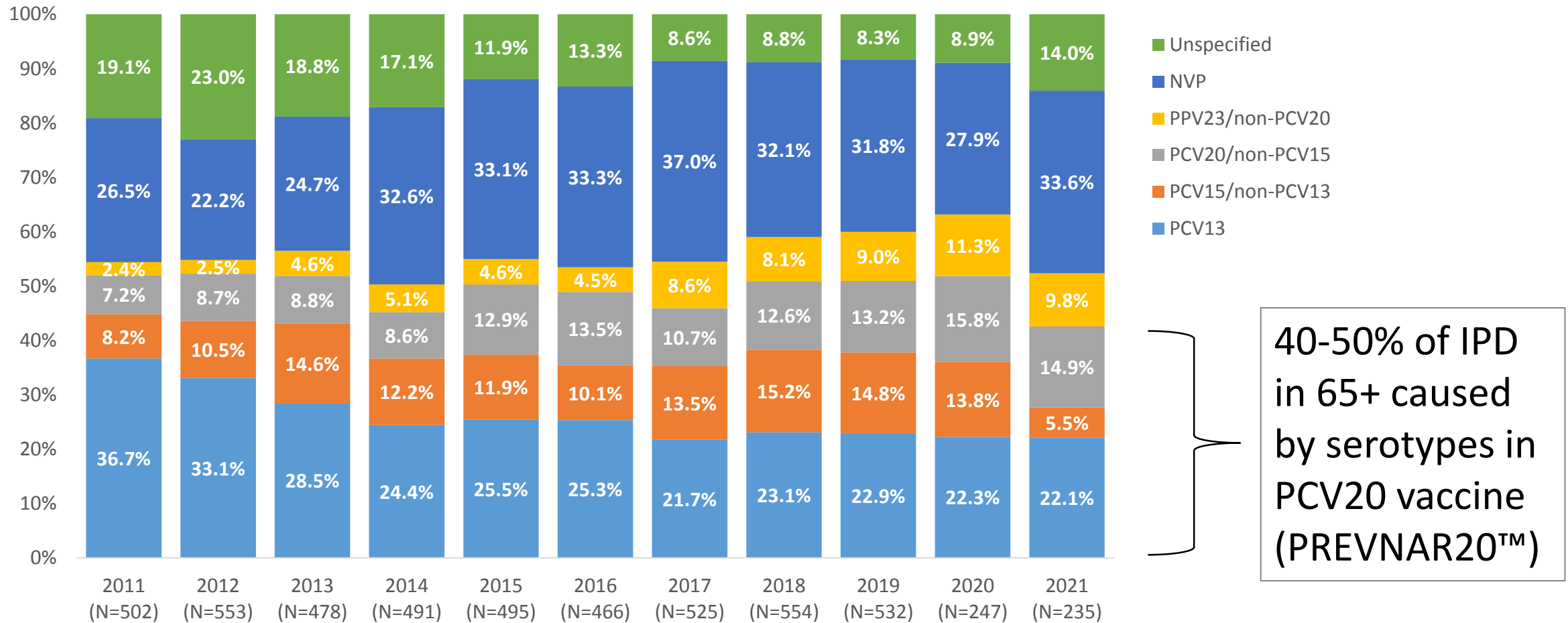
Serotypes Contained in Current and New Pneumococcal Vaccines

Prevnar®13  
VAXNEUVANCE®  
PREVNAR20™  
PNEUMOVAX®23

	1	3	4	5	6A	6B	7 F	9V	14	18 C	19 A	19 F	23 F	22 F	33 F	8	10 A	11 A	12 F	15 B	2	9N	17 F	20
PCV13																								
PCV15																								
PCV20																								
PPSV23																								

Image source: Kobayashi M. (2021). Considerations for Age-Based and Risk-Based Use of PCV15 and PCV20 among U.S. Adults and Proposed Policy Options. ACIP Meeting. October 20, 2021: CDC

# Invasive Pneumococcal Disease (IPD) among Ontario adults aged ≥65 years by serotype: 2011-2021



NVP = non-vaccine preventable

# NACI's recommendations for the use of PCV20 ('should be offered'\*) among adults not previously vaccinated (or unknown vaccination status)

## PCV20 for immunocompromised adults 18-49 years

### Immunocompromising (IC) conditions

- Sickle cell disease, congenital or acquired asplenia, or splenic dysfunction
- Congenital immunodeficiencies involving any part of the immune system, including B-lymphocyte (humoral) immunity, T-lymphocyte (cell) mediated immunity, complement system (properdin, or factor D deficiencies), or phagocytic functions
- Immunocompromising therapy, including use of long-term corticosteroids, chemotherapy, radiation therapy, and post-organ transplant therapy
- HIV infection
- Hematopoietic stem cell transplant (recipient)
- Malignant neoplasms, including leukemia and lymphoma
- Nephrotic syndrome
- Solid organ or islet transplant (candidate or recipient)

## PCV20 for adults 50-64 years at higher risk of IPD (includes IC, non-IC conditions and other risk factors)

### IC conditions

- Same list as left panel

### Non-immunocompromising (non-IC) conditions

- Heart disease
- Lung disease, including asthma requiring medical care in the preceding 12 months<sup>2</sup>
- Liver disease, including cirrhosis due to any cause
- Kidney disease
- Diabetes mellitus
- Neurologic condition impairing clearance of oral secretions
- Chronic cerebrospinal fluid (CSF) leak
- Cochlear implants

### Individuals with other risk factors

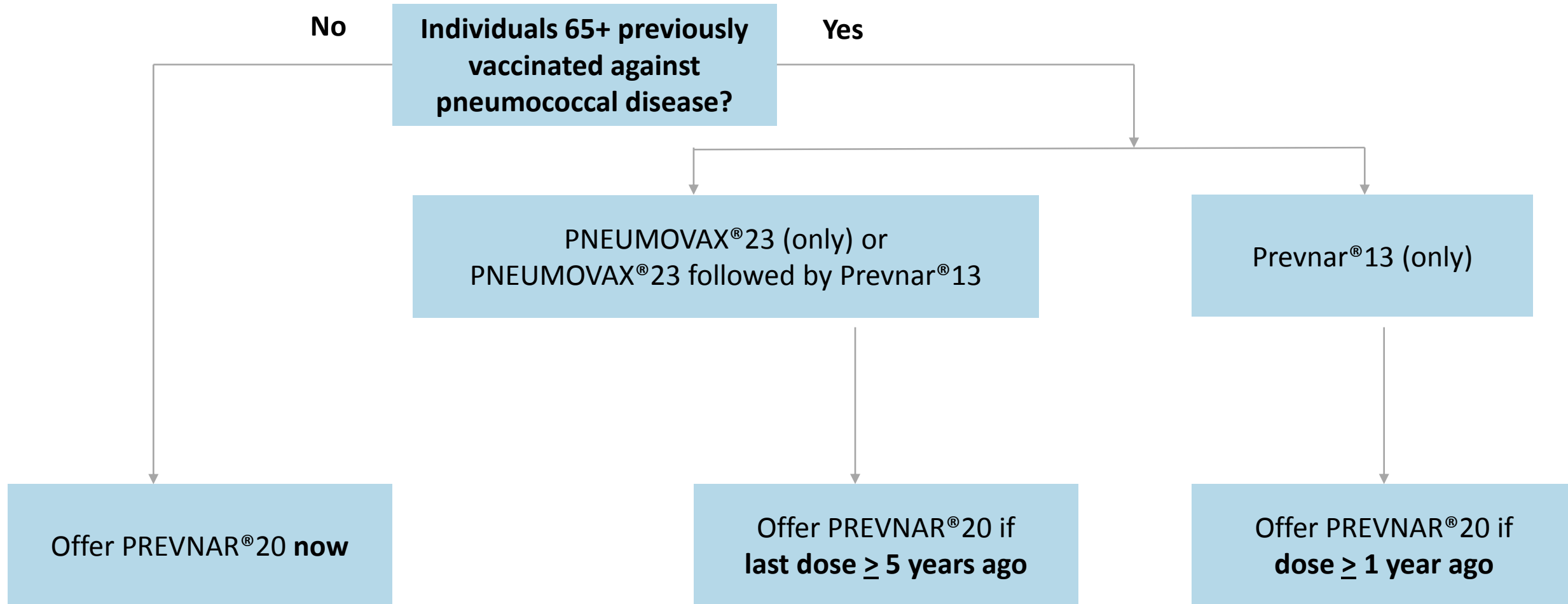
- who smoke;
- who use unregulated drugs;
- with alcohol use disorder;
- who are unhoused;
- who live in communities or settings (including LTC homes) experiencing sustained high IPD rates

## PCV20 for all adults 65+

- Regardless of risk factors

\*NACI also notes PCV15 (VAXNEUVANCE®) followed by PPV23 (PNEUMOVAX®23) may be offered

# NACI recommendations for PCV20 vaccine for individuals 65+ if previously vaccinated



## Acknowledgements

- Ramandip Grewal
- Tara Harris
- Maan Hasso
- Julianne Kus
- Whitley Meyer
- Christine Navarro
- Romy Olsha
- Nisha Thampi

## Questions?



# **Spring 2023 COVID-19 Booster Dose Campaign**



## Staying Up to Date

DRAFT

### **Staying Up to Date\*** as of April 3, 2023:

- For those **6 months – 4 years**, means having a completed primary series.
- For those **5 years and older**, means completion of the primary series and receipt of a booster dose (monovalent or bivalent) on or after September 1, 2022.
  - For **specific high-risk populations**, means completion of the primary series and receipt of a bivalent booster dose within the last 6 months.

\*At this time, the seasonality of COVID-19 is not known, and it has not yet been determined whether people will need a COVID-19 booster at a set time period (e.g., every 6 months). This guidance sets out what the recommendations are to date in terms of 'staying up to date', based on age and health status, and is subject to change as the COVID-19 pandemic evolves.

# Spring 2023 Booster Dose Campaign\*

DRAFT

- ❑ Individuals 5 years and older who have not yet received a booster dose since September 1, 2022, remain recommended to receive a booster dose if it has been **at least six months since their last dose or confirmed COVID-19 infection**. If a booster dose has been received since September 1, 2022, there is no current evidence that substantiates the need for an additional dose\*\*, beyond the high-risk groups mentioned below. Recommendations for future doses will be issued closer to Fall 2023.
- ❑ The following groups are recommended to receive a booster dose during Spring 2023 if **at least six months has passed since their last dose or confirmed COVID-19 infection**:
  - Individuals 65+
  - Residents of long-term care homes, retirement homes, elder care lodges, and other congregate living settings for seniors
  - Individuals 18+ living in congregate care settings for people with complex medical care needs
  - Pregnant individuals
  - Individuals 18+ who are moderately to severely immunocompromised
  - Individuals 55+ who identify as First Nations, Inuit, or Métis and their non-Indigenous household members aged 55+
- ❑ In Ontario, individuals outside of the above groups remain eligible and may opt to receive another bivalent dose during the Spring of 2023 based on their own personal risk factors (e.g., just less than 65 years with significant comorbidities and no prior history of COVID-19 infection) or on the advice of a health care provider

\*In Ontario, April 3, 2023, marks the start of the spring booster dose campaign

\*\* This is because of emerging evidence around the durability of protection against severe COVID-19 disease in people with hybrid immunity (previous COVID-19 infection AND COVID-19 vaccine), the high proportion of the population previously infected with COVID-19 as well as the current epidemiology of COVID-19 in 2023



# Ontario eConsult Service

## COVID 19 Community of Practice

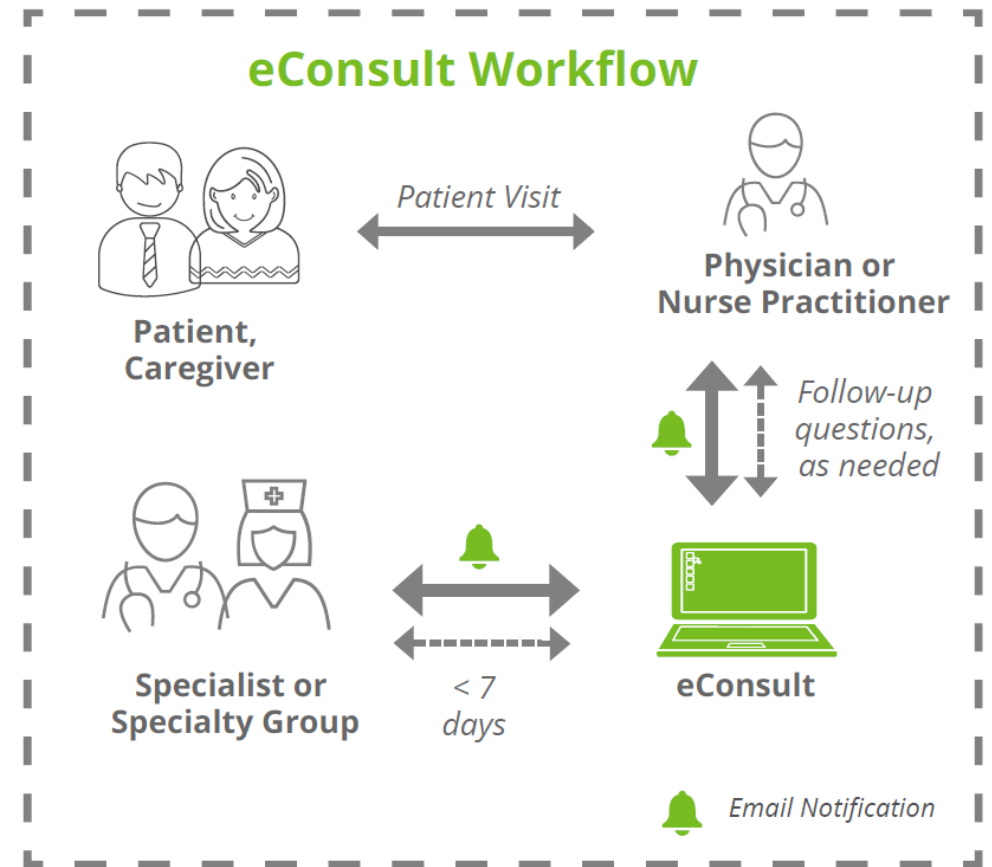
May 5, 2023

# What is eConsult?

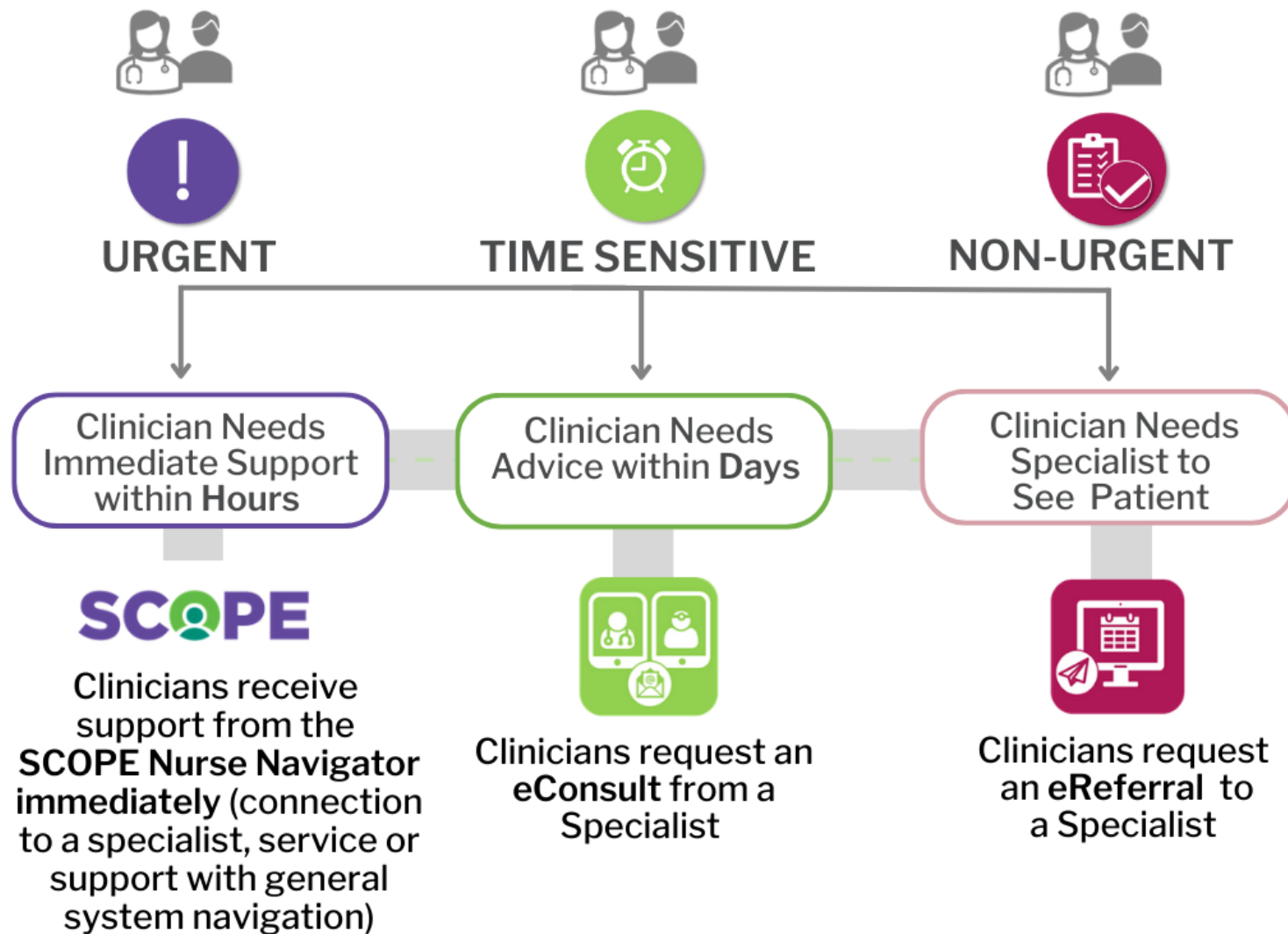
**eConsult** enables physician or nurse practitioner to engage in a secured, electronic dialogue with specialists to manage patient care, often without the need for a patient visit with specialist.

## Benefits

- ✓ More flexibility and better documentation than traditional phone calls, pages, or hallway conversations
- ✓ Faster access to specialist advice – responses received, on average, within 1 day (expected turnaround time is 7 days)
- ✓ Avoid unnecessary in-person specialist visits
- ✓ Improved care coordination
- ✓ Builds relationships between primary care and specialists
- ✓ Prompts learning for primary care and specialists



# Where Does eConsult Fit into my Daily Work?



# The Ontario eConsult Program

- The Ontario eConsult Program includes the provincial Ontario eConsult Service ([120+ BASE™ Managed specialties](#) + Direct-to-Specialist), the Champlain eConsult BASE™ service ([157 BASE™ Managed Specialties](#)), Teledermatology and Teleophthalmology.
  - The provincial **Ontario eConsult Service**, hosted on the OTNhub, combines two successful models of eConsults: BASE™ Managed Specialty Model and OTN's Direct to Specialist model. Ontario eConsult is available at no cost to all MDs and NPs and their delegates who are MOH funded for more than 50% of their services.
  - The **Champlain eConsult BASE™** service hosted on the HealthCareWorks platform, out of Winchester District Memorial Hospital, is primarily used in the Champlain region



# Provincial eConsult BASE™ Managed Specialty Groups (n=125)

## Abortion Care

### Addiction & Opioid

- Addiction Medicine
- Addiction Psychiatry
- Opioid

### Allergy & Clinical Immunology

- General & Pediatrics
- COVID-19 Vaccine - Allergy/Immunology

### Anesthesiology

### Cannabis Medicine

### Cardiology

- General & Pediatrics
- Cardiac Surgery
- Electrophysiology - General & Pediatrics
- Inherited Heart Rhythm Disorders - General & Pediatrics
- Interventional

### Clinical Pharmacology & Toxicology

### Concussion

### COVID-19

- General – Infectious Diseases
- Post-COVID Condition
  - Chronic Fatigue Syndrome - Environ Health
  - Internal Medicine
  - Neurology
  - Phys Med/Rehab
  - Respiratory Recovery
- Pregnancy
- Respiriology
- Rheumatology
- Vaccination – Allergy/Immunology
- Vaccination – Public Health

### Dentistry

- Pediatric

### Dermatology

- General & Pediatrics

## Endocrinology

- General & Pediatrics
- Diabetes
- Gynecologic Reproductive Endocrinology & Infertility

### Environmental Health

- General
- Post-COVID Chronic Fatigue Syndrome

### Gastroenterology

- General & Pediatrics
- Gastrointestinal Oncology

### Genetics

- Medical Genetics – General & Pediatric

### Geriatrics

- General
- Care of the Elderly
- Frailty Management
- GeriMedRisk
- Medication
- Psychiatry

### Gynecology

- General
- Abortion Care
- Gynecologic Oncology
- Gynecologic Reproductive Endocrinology & Infertility
- Pelvic Mass Imaging
- Urogynecology

### Hematology and Thrombosis

- Hematology - General & Pediatrics
- Malignant Hematology
- Thrombosis

### Hepatology

- General & Pediatrics

### HIV

- General
- Psychiatry

## Infectious Diseases

- General & Pediatrics
- COVID-19

### Internal Medicine

- General
- Post-COVID Condition

### LGBTQIA+

- Sexual Health
- Transgender

### Nephrology

- General & Pediatrics

### Neurology

- General & Pediatrics
- Post-COVID Condition
- Epilepsy
- Headache
- Movement Disorders
- Neuromuscular
- Neuroradiology
- Neurosurgery
- Psychedelics & Psychedelic-Assisted Therapy
- Sleep Medicine
- Stroke

### Obstetrics

- General
- Abortion Care
- COVID-19 and Pregnancy

### Oncology

- Medical
- Breast
- Gastrointestinal
- Gynecologic
- Lung
- Malignant Hematology
- Pediatric
- Radiation
- Urology

## Ophthalmology

### Orthopaedics

- General & Pediatrics
- Spinal Surgery

### Otolaryngology

- ENT
- Head & Neck Surgery

### Pain Medicine

### Palliative Care

### Pediatrics

- General
- ADD/ADHD
- Allergy & Clinical Immunology
- Cardiology
- Dentistry
- Dermatology
- Developmental
- Electrophysiology
- Endocrinology
- Gastroenterology
- Hematology
- Hepatology
- Infectious Diseases
- Inherited Heart Rhythm Disorders
- Neonatal/Perinatal
- Medical Genetics
- Nephrology
- Neurology
- Oncology
- Orthopaedic Surgery
- Psychiatry
- Urology

### Physical Medicine & Rehabilitation

- General
- Post-COVID Condition

## Psychiatry

- General (English & French)
- ADD/ADHD
- Addiction
- Anxiety
- Depression, Bi-Polar Disorder
- Developmental/ Behavioural
- Geriatric
- HIV
- Medically Complex
- Mood Disorders
- Pediatrics
- Perinatal
- Transitional Age (16-25)

### Public Health

- General
- COVID-19 - Infectious Diseases
- COVID-19 & Pregnancy
- COVID-19 & Rheumatology
- COVID-19 Vaccine – Allergy/Immunology
- COVID-19 Vaccine – Public Health

### Radiology

- General
- Breast Imaging
- Neuroradiology

### Respirology

- General
- COVID-19
- Lung Oncology
- Post-COVID Respiratory Recovery
- Sleep Medicine

### Rheumatology

- General
- COVID-19
- Inflammatory Arthritis
- Osteoporosis

## Sexual Health

- HIV
- LGBTQIA+
- Male Infertility & Erectile Dysfunction
- STI

### Sleep Medicine

- Neurology
- Psychiatry
- Respirology

### Sport & Exercise Medicine Surgery

- Cardiac
- General Surgery
- Neurosurgery
- Orthopaedic – General & Pediatric
- Plastic Surgery
- Spinal
- Thoracic
- Vascular

### Transgender

### Urology

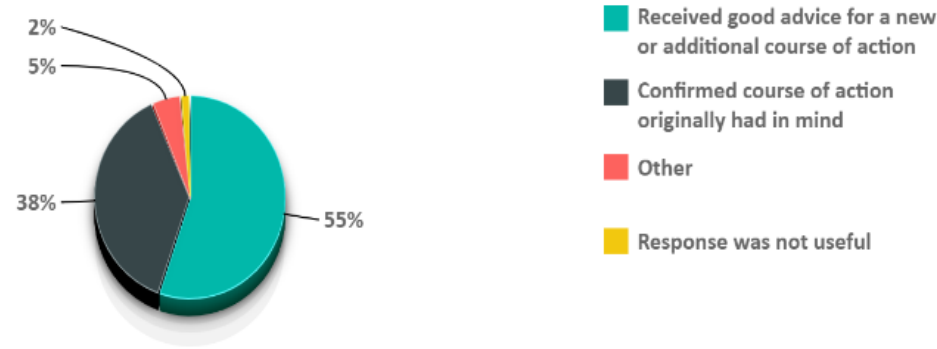
- General & Pediatrics
- Male Infertility & Erectile Dysfunction
- Oncology

# How Does eConsult Support Primary Care

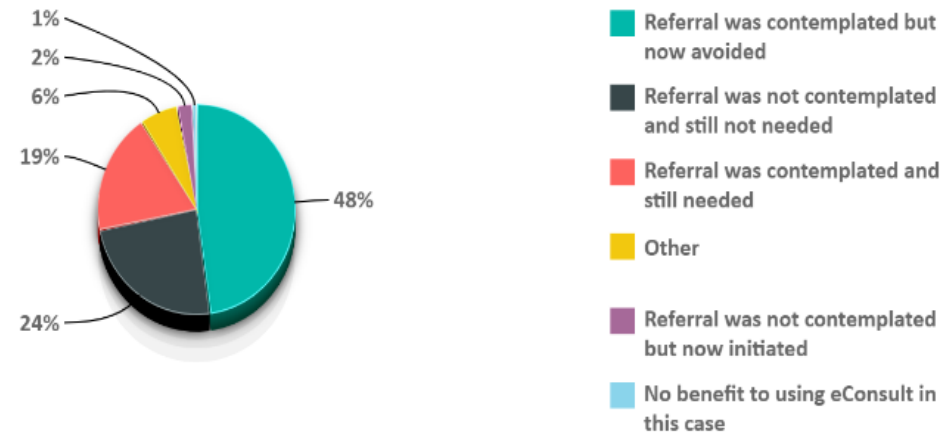
April 2022 – March 2023

## Impact of eConsult on Primary Care Provider Course of Action:

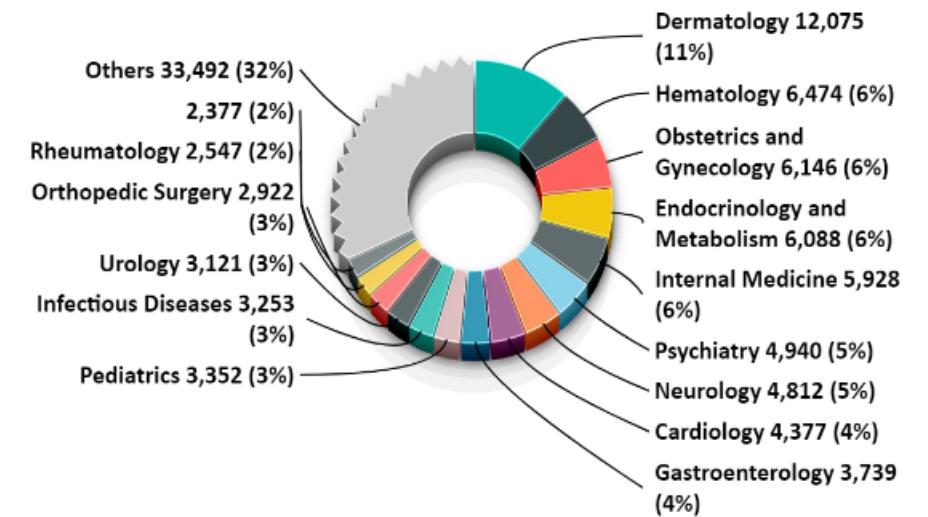
N = 16,416



## Impact of eConsult on Need for Face-to-Face Referral:



## Top Specialties<sup>2</sup>



# Use Cases for eConsult

## Non-Patient Specific or Non-OHIP questions

(cannot bill K738A without OHIP number)

- COVID-19 groups
- Allergy/Immunology for vaccine side effects
- Public Health for complex vaccine or infectious disease questions
- Refugee health questions
- Out of Province patients/no OHIP

## Patient Specific questions

(can bill K738A with OHIP number)

- Dermatology – send picture
- Hematology – receive recommendations in a few days rather than months
- Rheumatology – advice received rather than referral being rejected
- Learning/mentorship – gender affirming prescribing, chronic pain management, advice to adjust complex medication regimens

\* All cases submitted to Dermatology are required to have an OHIP number due to their unique funding requirements

# What Do I Need to Use the Ontario eConsult Service?

## OneID

- Physicians without a ONEID can obtain their ONEID through the CPSO Member Portal.
- Nurse practitioners, delegates & those who need assistance getting a ONEID, email [eConsultCOE@toh.ca](mailto:eConsultCOE@toh.ca)

## OTNhub

- Complete your registration for an OTNhub account on the sign up page <https://otnhub.ca/signup-info>

If you would like assistance signing up for Ontario eConsult or to learn how to send an eConsult, please fill out the [intake form](#) or email [eConsultCOE@toh.ca](mailto:eConsultCOE@toh.ca) to be contacted by our team.

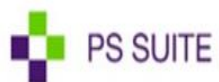
Self serve training videos on how to send an eConsult, directly to the OTNhub, are available [here](#).



# Common Hurdles to Adoption

- Not fully integrated with EMRs, administrative burden
  - Leverage existing integrated options with some EMRs
  - Leverage eServices program change management specialists to build eConsult use into clinic workflow & leverage delegates, where possible
- Many onboarding steps requiring clinician involvement
  - Receive support with collaboration between eServices change management specialists/regional deployment teams through every step
- Additional work downloaded from specialist back to family physician
  - Specialist advice can support faster, more effective testing and treatment for patients (days vs months) and reduce repeated calls/visits from patients waiting for specialist advice
  - eConsult learning can be turned into Linking Learning to Practice Education Credits (MAINPRO)

# Ways to Send an Integrated Ontario eConsult (OTN)



AVAROS



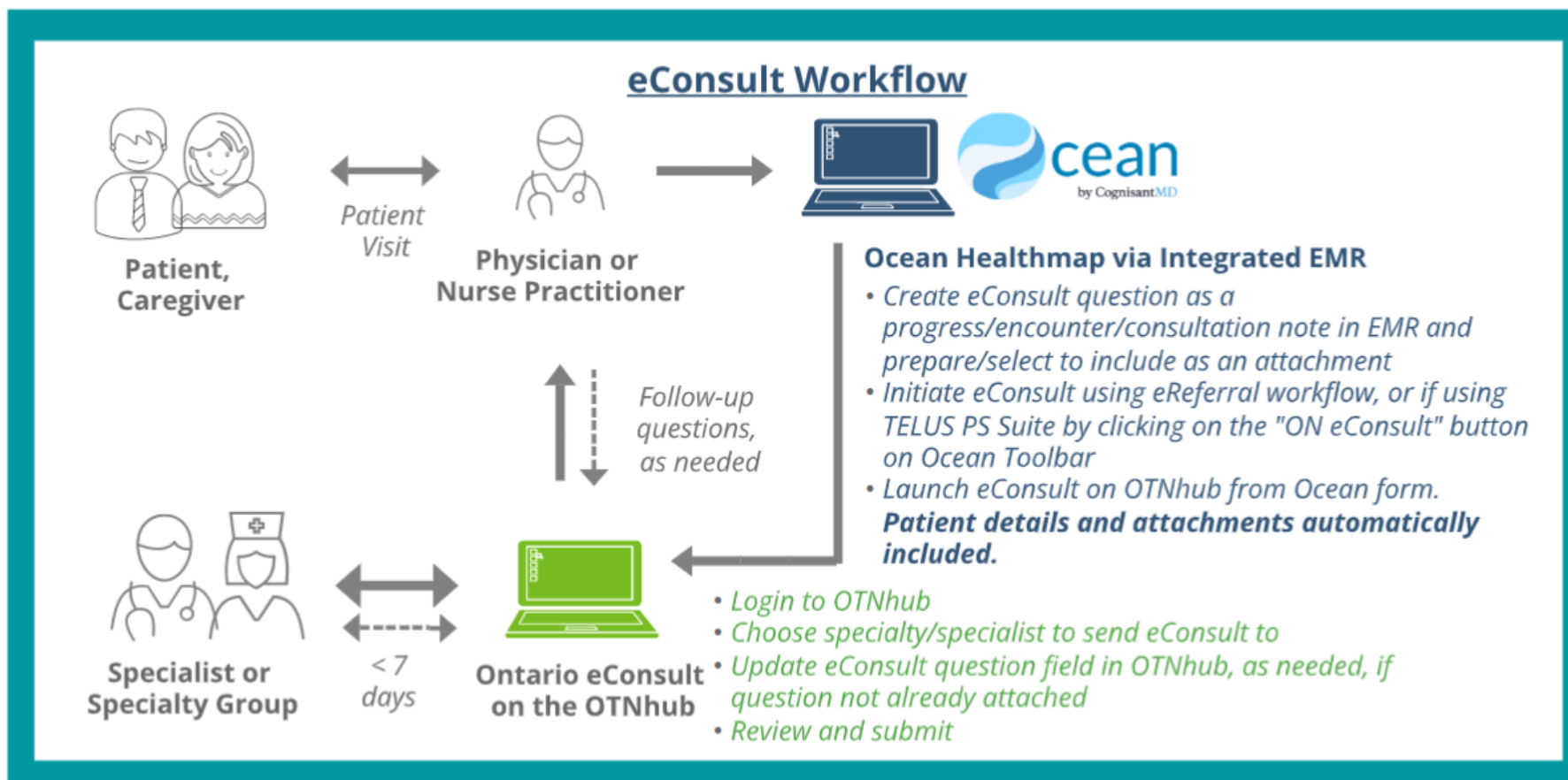
OntarioMD  
Full EMR  
Integration

cean  
by CognisantMD  
\*NEW\* Ocean  
Integration (1-  
way)

	*V1 only ✓		✓	✓	✓	✓
✓	✓	✓				

Please fill out the [intake form](#) to be directed to an Ontario eConsult deployment team member for any of these integrated solutions or scan QR code

# Sending an eConsult using Ocean



## Note:

- Receiving your eConsult response from the specialist, and any additional correspondence, will still occur directly on the OTNhub web platform
- To use this workflow, both the OTNhub and Ocean accounts used must be linked to the same Professional ID of the requesting clinician.
- This technical workflow does not support delegate functionality.



# How Does Ocean eReferral Work with eConsult?

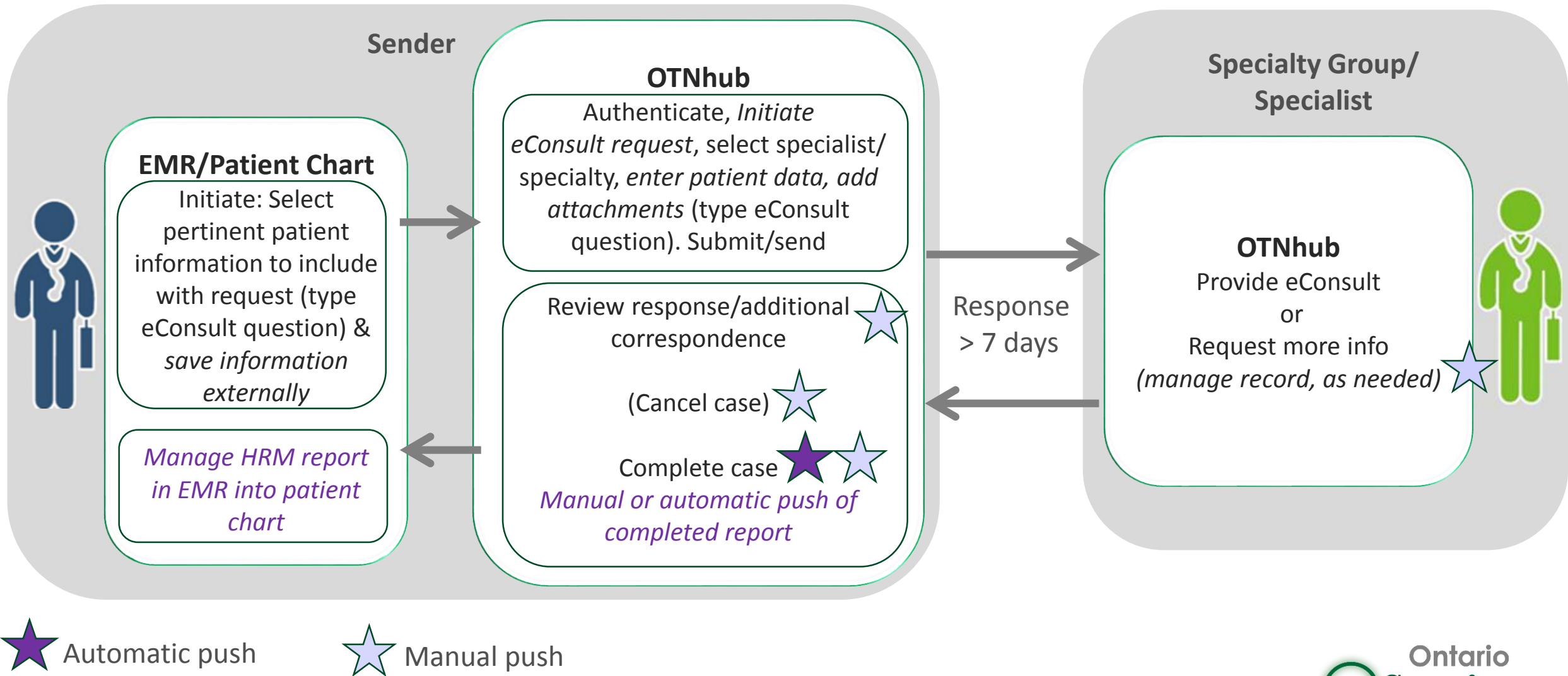
- Ocean eReferral is available for free to all MDs and NPs and their delegates, in Ontario, for both senders and receivers of referral requests
  - Delegates can use Ocean eReferral to send referrals on your behalf
- The Ocean to Ontario eConsult integration uses a similar workflow to eReferral, to initiate an eConsult from your EMR, through Ocean, to the OTNhub.
  - Delegates can only submit eConsults using the non-integrated (web-based) version of eConsult on OTNHub due to CPSO and CNO matching requirements
- To initiate eConsults to the OTNhub – Patient information and selected attachments flow seamlessly from your EMR into the eConsult form, saving time & ensuring accuracy of information
  - No need to manually type or copy & paste patient information from your EMR to your eConsult form
  - No need to download/PDF attachments from your EMR to upload to your eConsult form



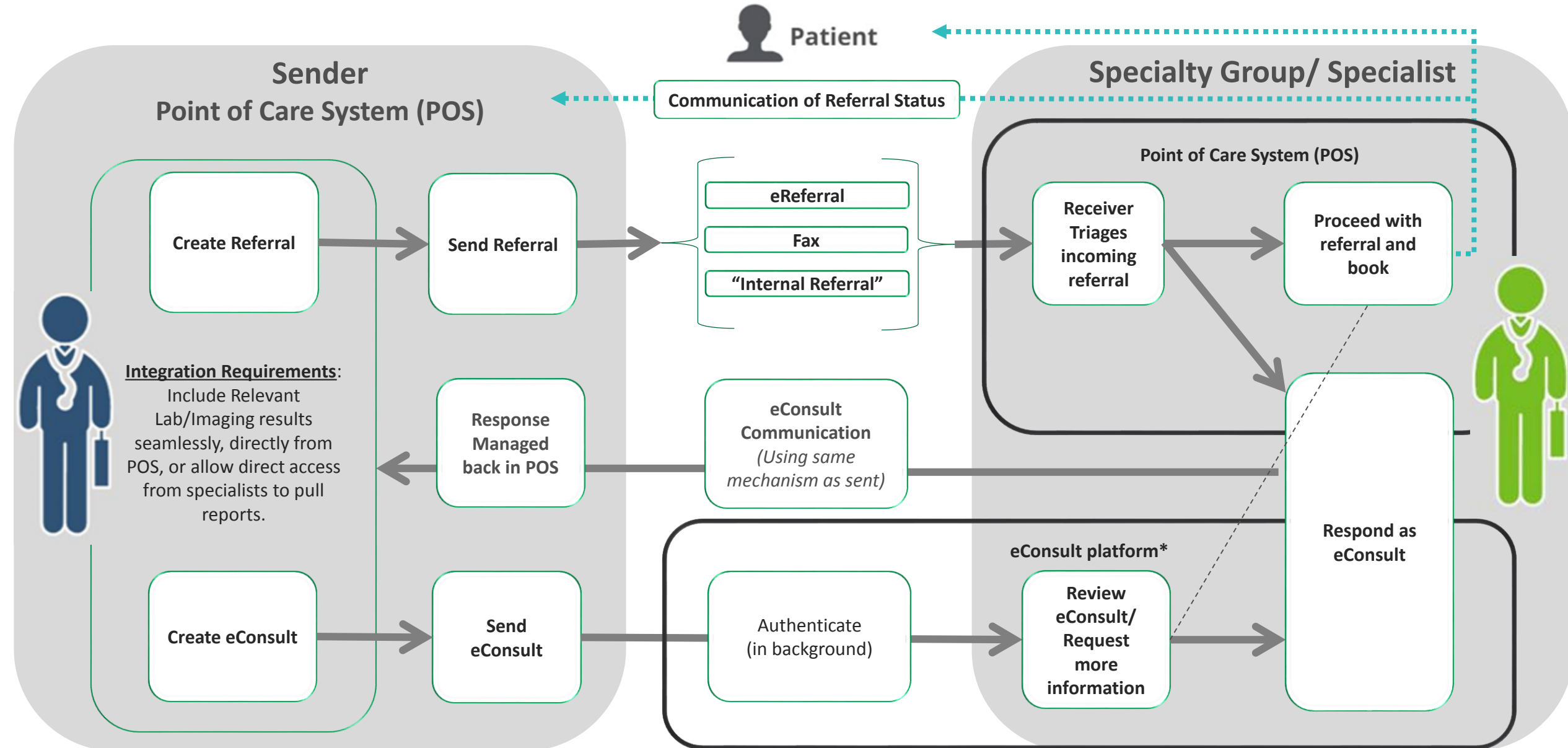
To get set up to send eConsults through Ocean (along with eReferral) , fill out the eServices intake form or scan for the Ocean to Ontario eConsult integration QR code



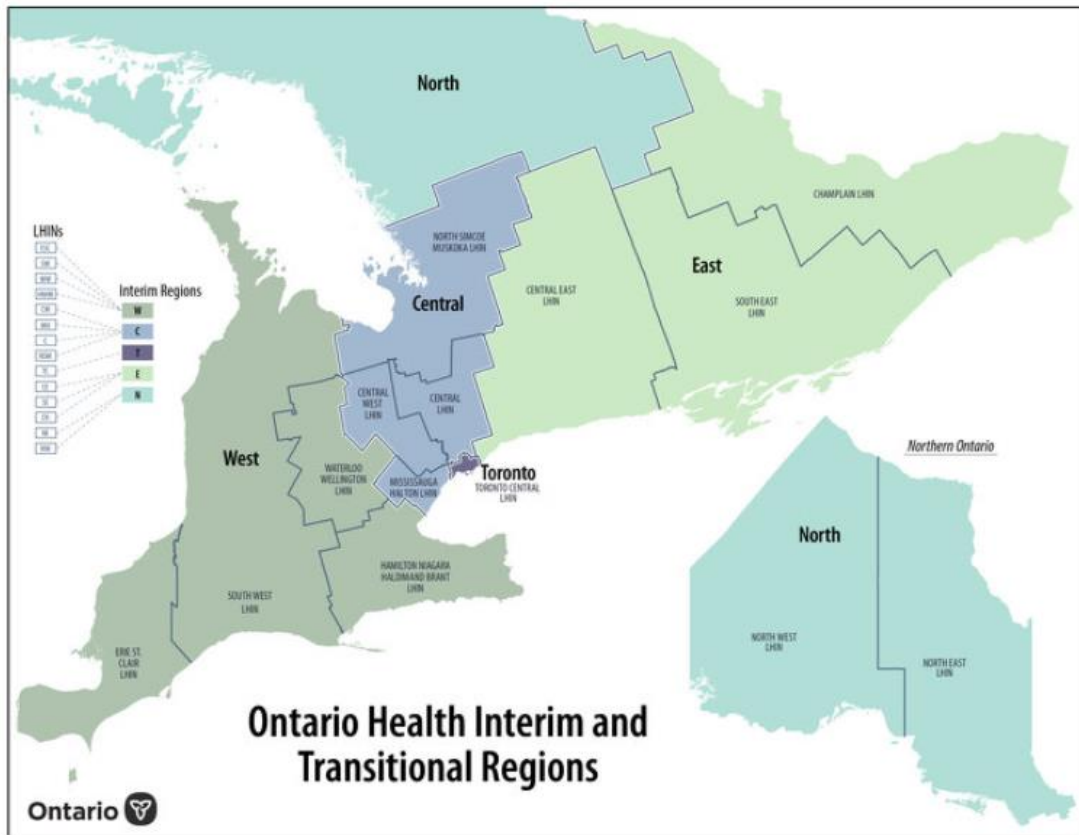
# Managing Completed Cases (Reports) – HRM®



# Future Vision: eConsult and eReferral Integrated Clinical Workflows



# eServices Deployment Team Support



## eConsult

### North West

[econsultsjcg@tbh.net](mailto:econsultsjcg@tbh.net)

### North East

[brady.coggins@ontariohealth.ca](mailto:brady.coggins@ontariohealth.ca)

## West:

ESC: [matthew.mcavoy@transformssso.ca](mailto:matthew.mcavoy@transformssso.ca)

SW/WW: [andrea.mathieu@ehealthce.ca](mailto:andrea.mathieu@ehealthce.ca)

HNHB: [econsult@HITSeHealth.ca](mailto:econsult@HITSeHealth.ca)

## Central

Central/CW/MH/NSM:

[wendy.lang@ehealthce.ca](mailto:wendy.lang@ehealthce.ca)

## Toronto

[econsult@wchospital.ca](mailto:econsult@wchospital.ca)

## East

SE/CE: [seamo.digitalhealth@queensu.ca](mailto:seamo.digitalhealth@queensu.ca)

Champlain eConsult:

[econsultsupport@lhinworks.on.ca](mailto:econsultsupport@lhinworks.on.ca)

## eReferral

### North West and North East

[eServicesNorth@ontariohealth.ca](mailto:eServicesNorth@ontariohealth.ca)

### West (ESC, SW/WW, HNHB)

[eReferral@eHealthce.ca](mailto:eReferral@eHealthce.ca)

## Central

Central/CW/MH/NSM:

[eReferral@eHealthce.ca](mailto:eReferral@eHealthce.ca)

## Toronto

[eReferralTorontoRegion@uhn.ca](mailto:eReferralTorontoRegion@uhn.ca)

### East (SE/CE, Champlain)

[contact@ereferralontarioeast.ca](mailto:contact@ereferralontarioeast.ca)

:

# Thank You

For more information about **eConsult**  
visit: <https://econsultontario.ca/>

For more information about **eReferral**  
visit: <https://ehealthce.ca/eReferral.htm>





# Appendix

# FAQ's – Ocean to OTN eConsult Integration (Phase 1)



Clinicians still need to authenticate/sign-on to the OTNhub to complete the submission of their eConsults



Receiving your eConsult response from the specialist, and any additional correspondence, still occurs directly on the OTNhub web platform



To use this workflow, both the OTNhub and Ocean accounts used must be linked to the same Professional ID of the requesting clinician.

- *This technical workflow does not support delegate functionality*



The integration is currently only available for EMR's integrated for Ocean eReferral: TELUS PS Suite, OSCAR and Accuro



Phase 1 supports initial submission/sending of an eConsult to the OTNhub, from the providers EMR, through Ocean

Full bi-directional integration planned for Fall 2023 (EMR, Ocean & OTNhub)



# Expressions of Interest for Interprofessional Primary Care Teams – Update (as of May 5, 2023)

- On April 14, we committed to ensuring members were updated regarding the Expression of Interest process.
- We expect a release the week of May 8 and a 5-6 week deadline for applications.
- MOH/OH will be offering technical briefing/information session one week after the EOI is announced. OCFP will share details.

# Optimal outcomes: How to navigate difficult interactions

*A Practising Well Community of Practice session*

with Drs. Joan Chan, Claudia Hubbes and James Goertzen

**May 24, 2023**  
**8:00am – 9:00am**

Join our session as we share personal experiences in navigating difficult interactions, provide insights into what we've learned and tips for managing these situations, including when and how to terminate the physician-patient relationship.



**Register Now**

<https://www.ontariofamilyphysicians.ca/education-practice-supports/events/register?&eventID=93>

# Questions?

Webinar recording and curated Q&A will be posted soon

<https://www.dfcm.utoronto.ca/covid-19-community-practice/past-sessions>

Our next Community of Practice: May 26, 2023

Contact us: [ocfpcme@ocfp.on.ca](mailto:ocfpcme@ocfp.on.ca)

Visit: <https://www.ontariofamilyphysicians.ca/tools-resources/covid-19-resources>

The COVID-19 Community of Practice for Ontario Family Physicians is a one-credit-per-hour Group Learning program that has been certified for up to a total of 32 credits..

**Post session survey will be emailed to you. Mainpro+ credits will be entered for you with the information you provided during registration.**